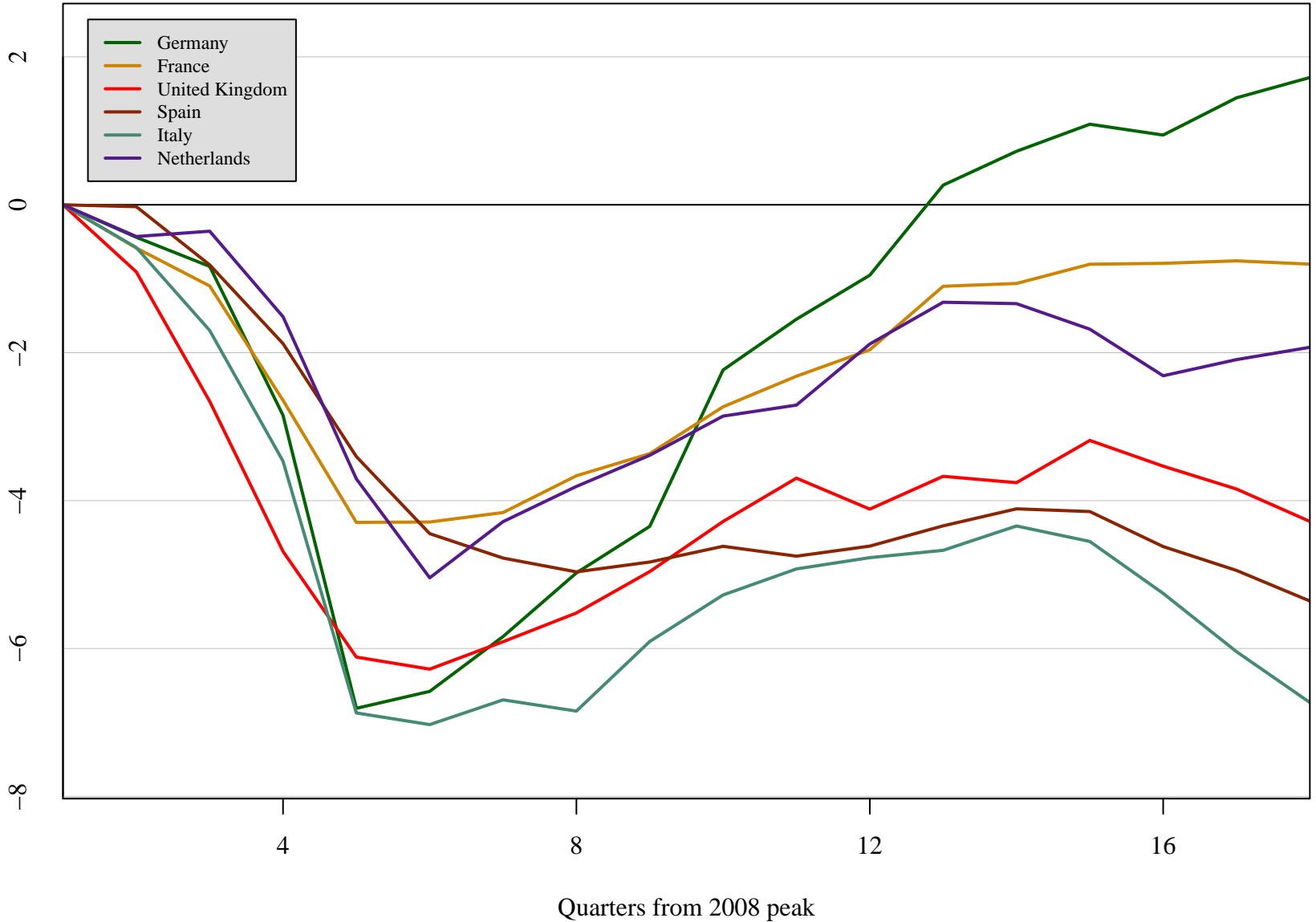


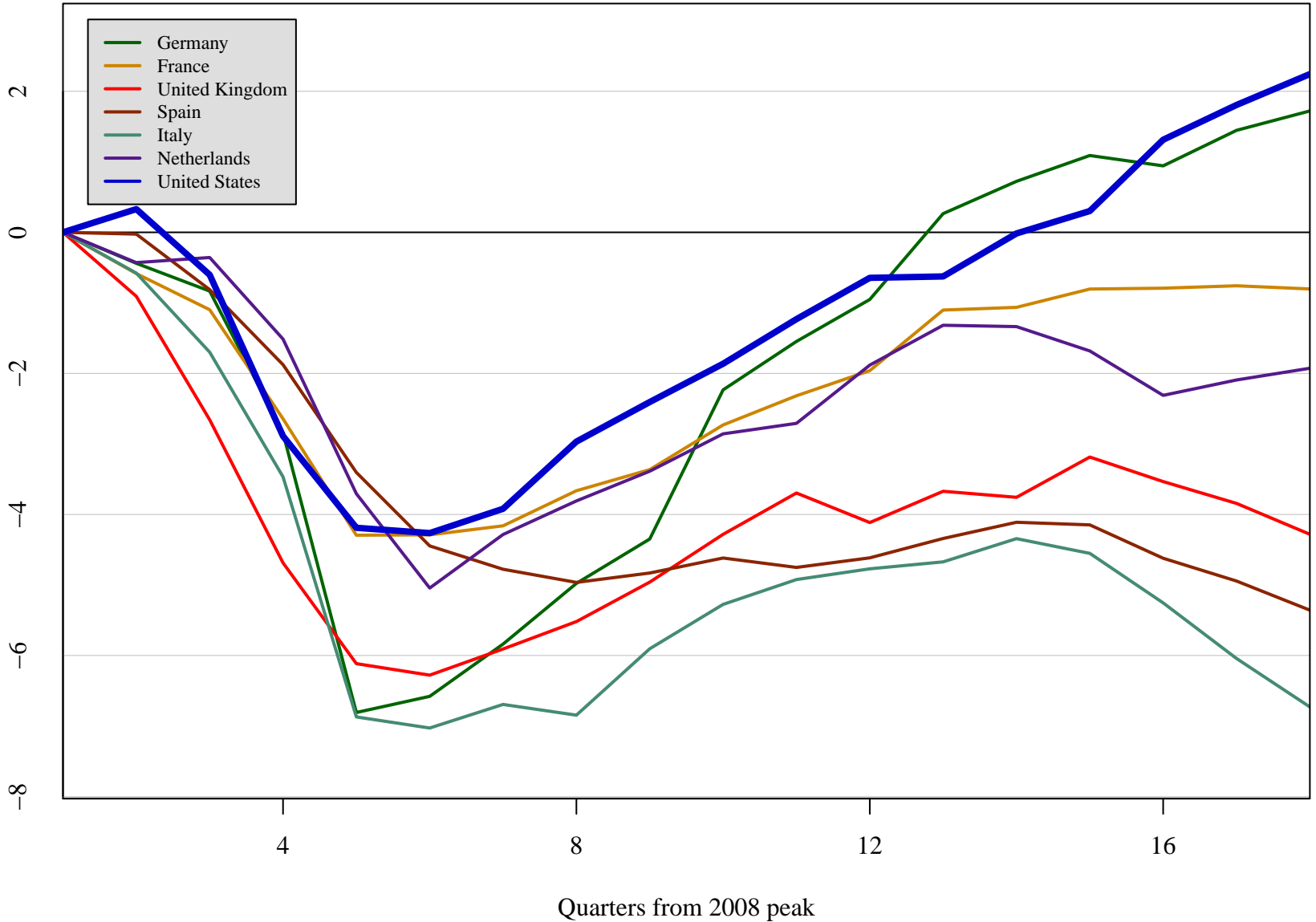
# Real Gross Domestic Product

Percentage change from 2008 peak, Seasonally Adjusted



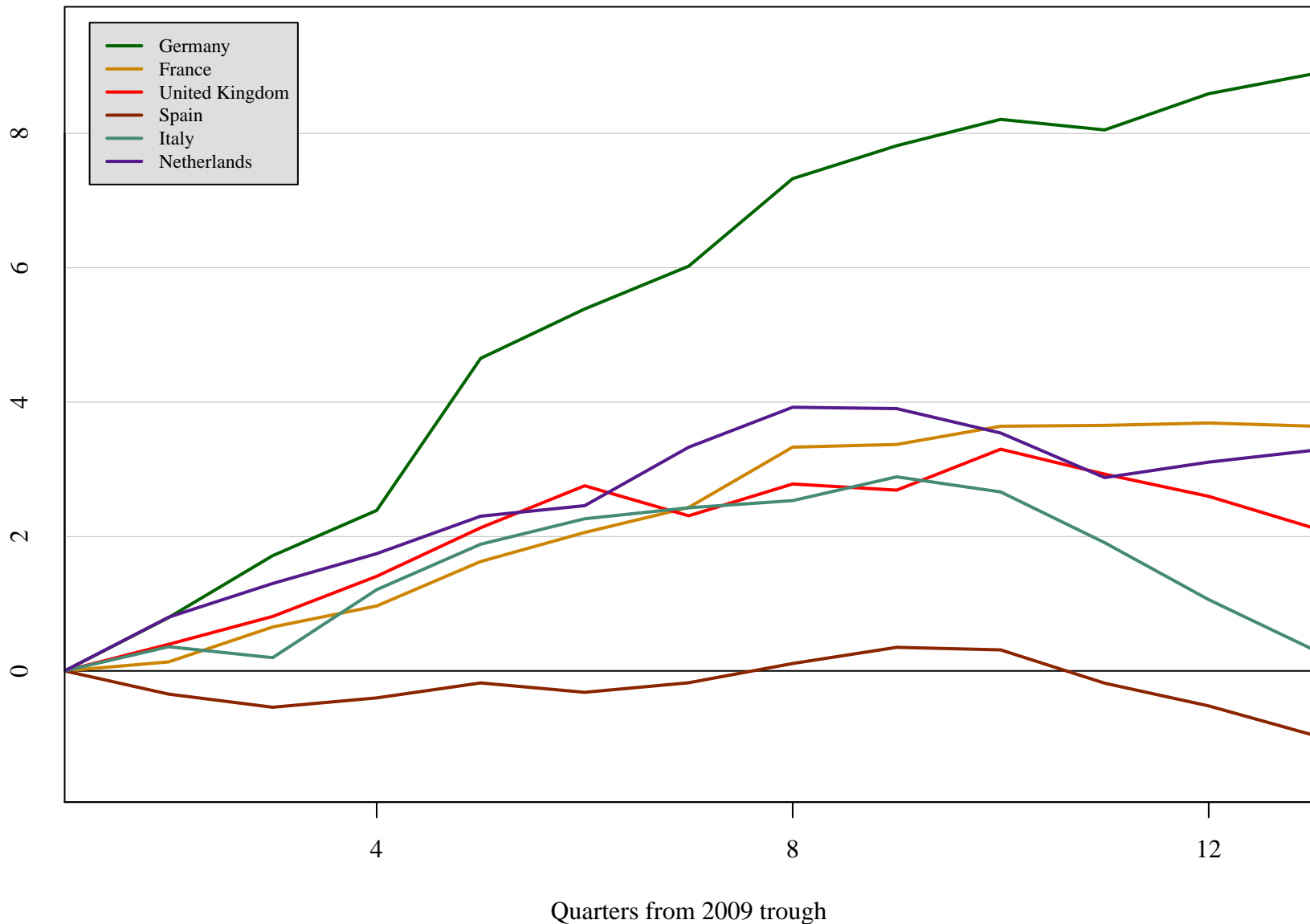
# Real Gross Domestic Product

Percentage change from 2008 peak, Seasonally Adjusted



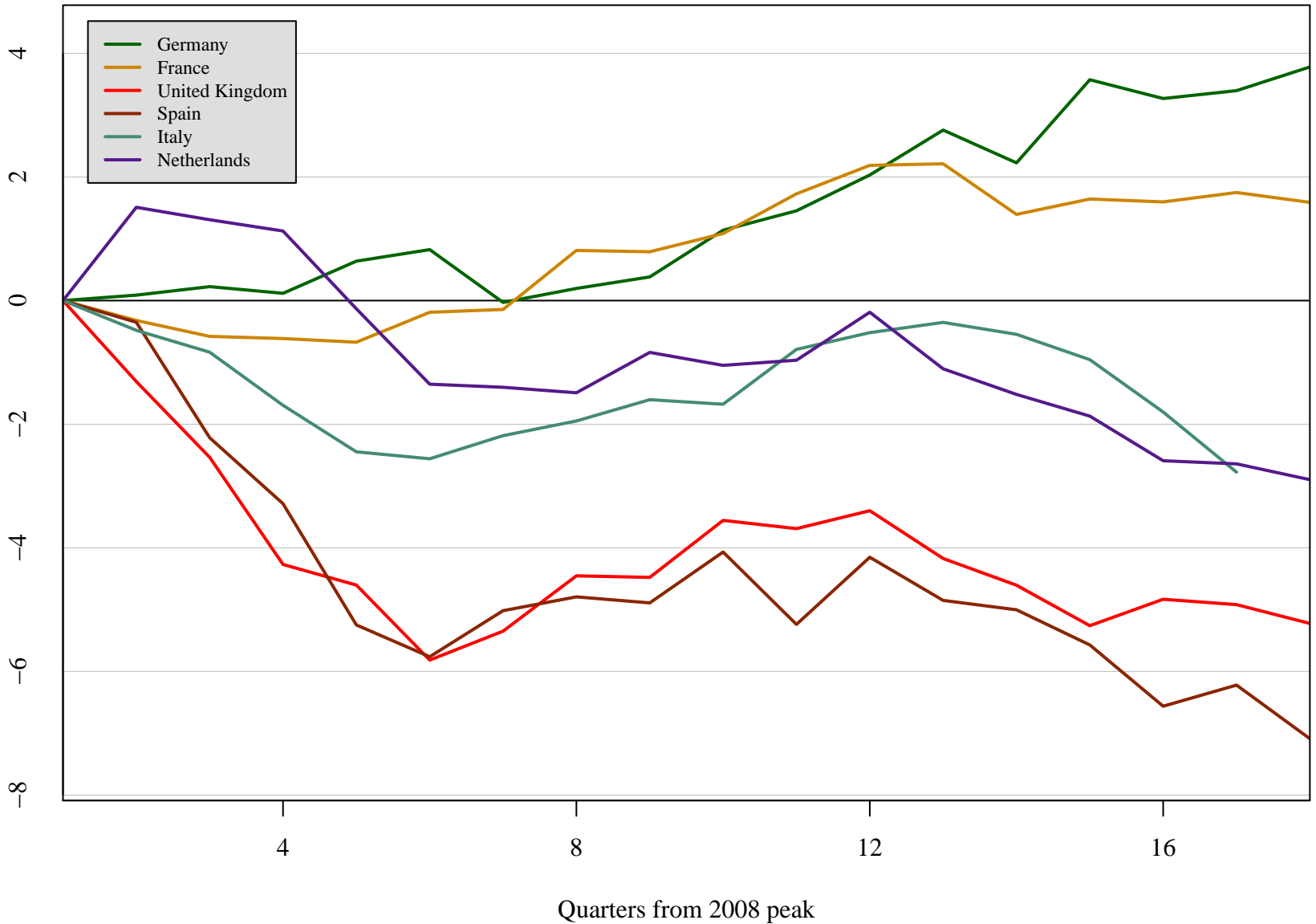
# Real Gross Domestic Product

Percentage change from 2009 trough, Seasonally Adjusted



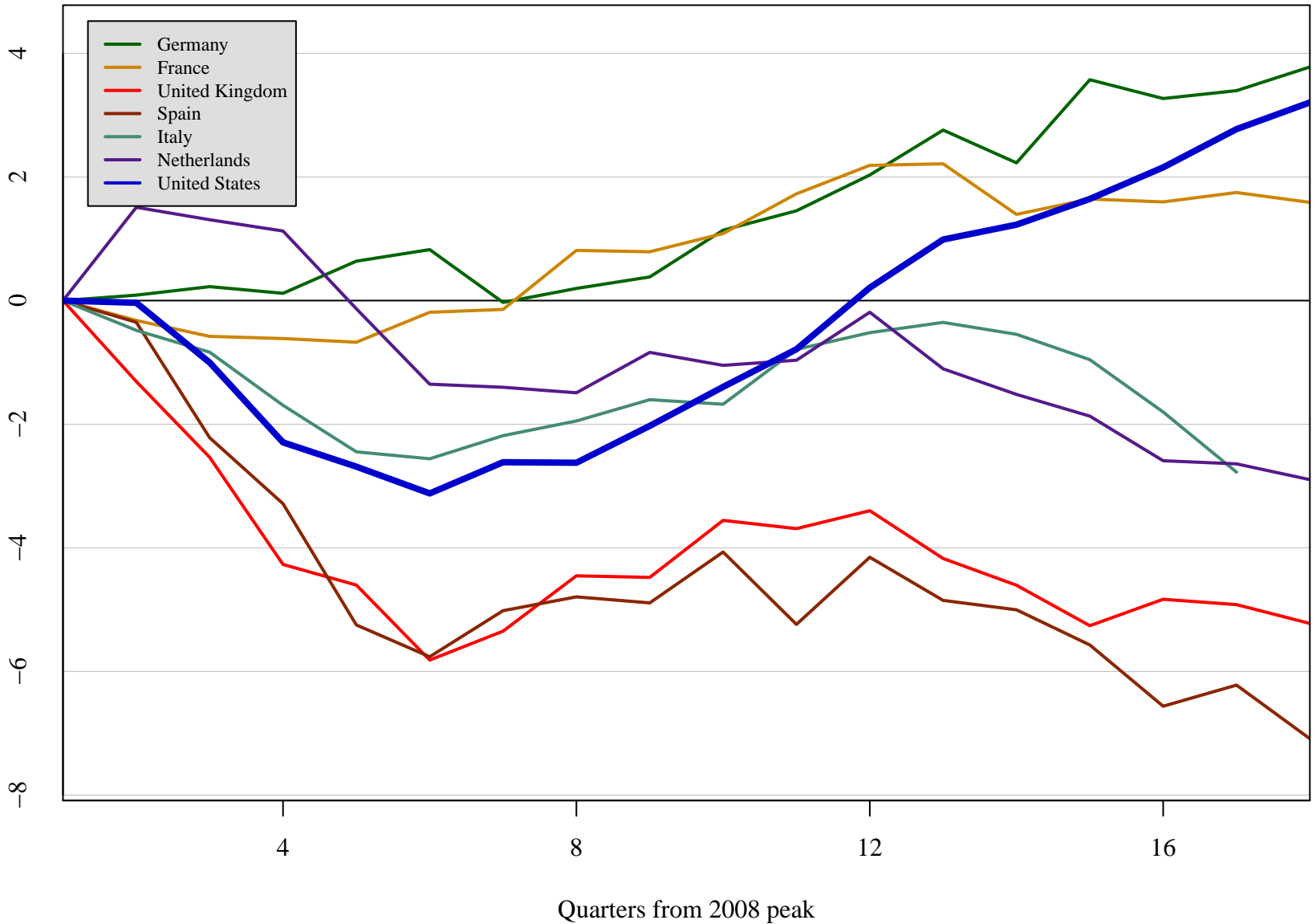
# Real Private Final Consumption Expenditures

Percentage change from 2008 peak, Seasonally Adjusted



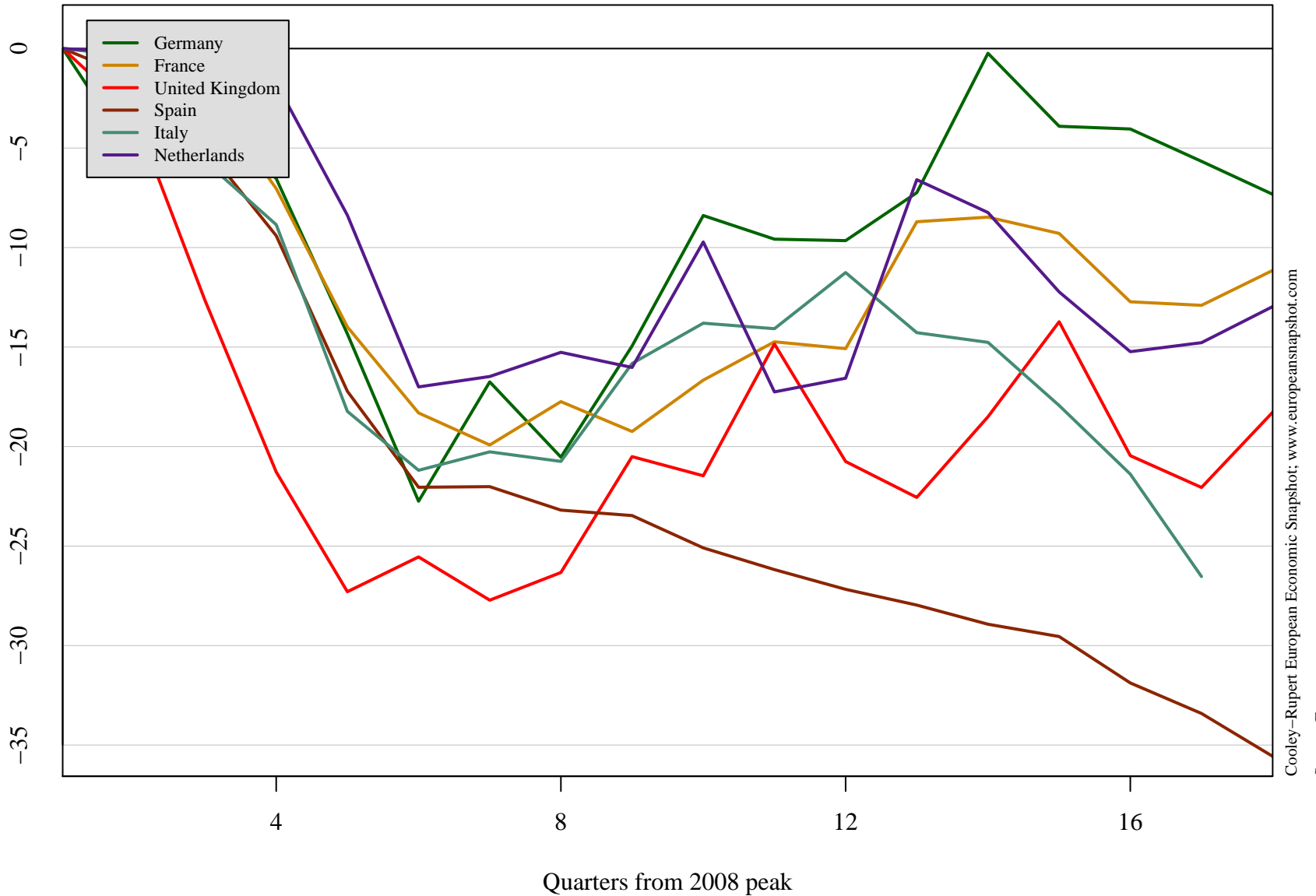
# Real Private Final Consumption Expenditures

Percentage change from 2008 peak, Seasonally Adjusted



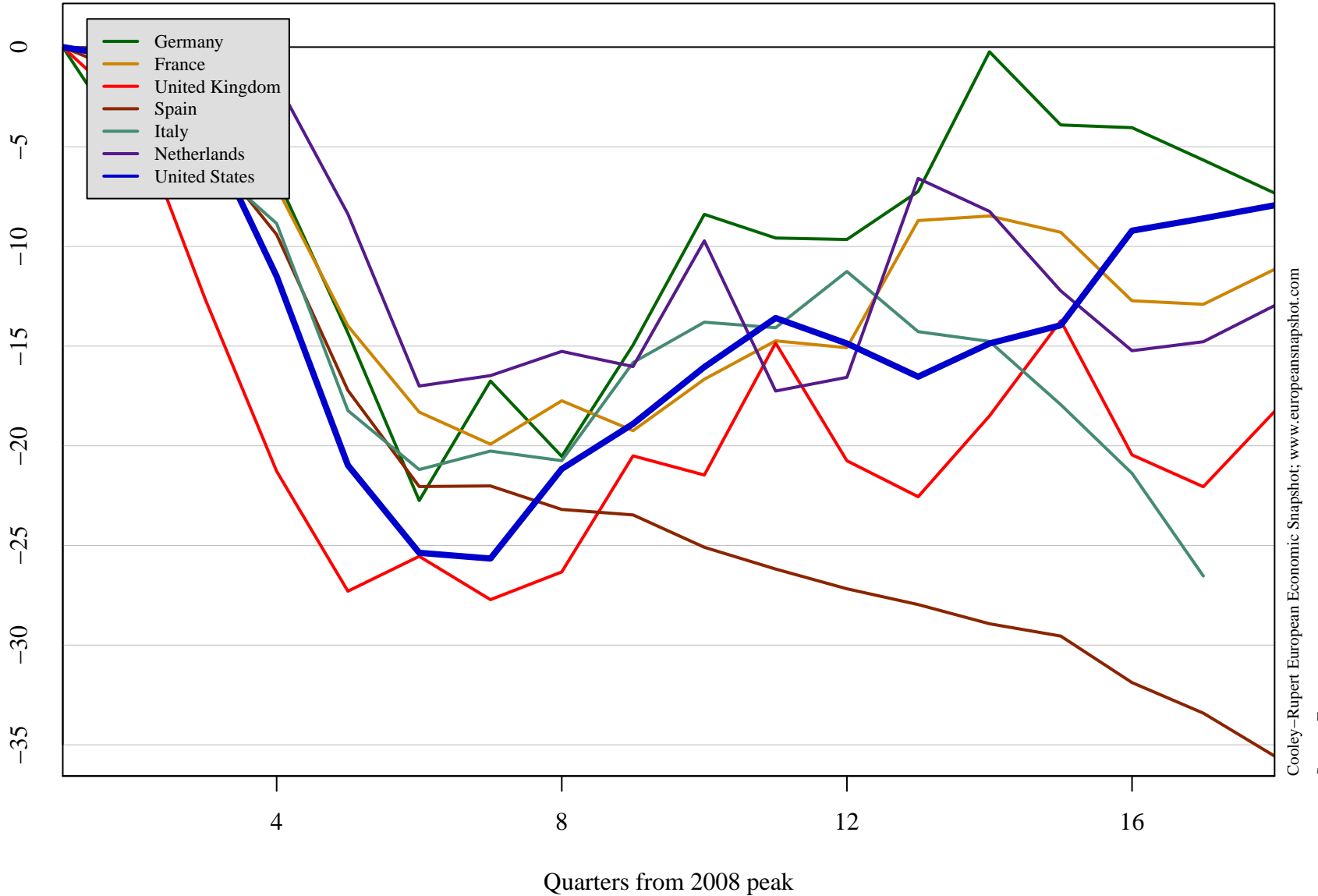
# Real Gross Capital Formation

Percentage change from 2008 peak, Seasonally Adjusted



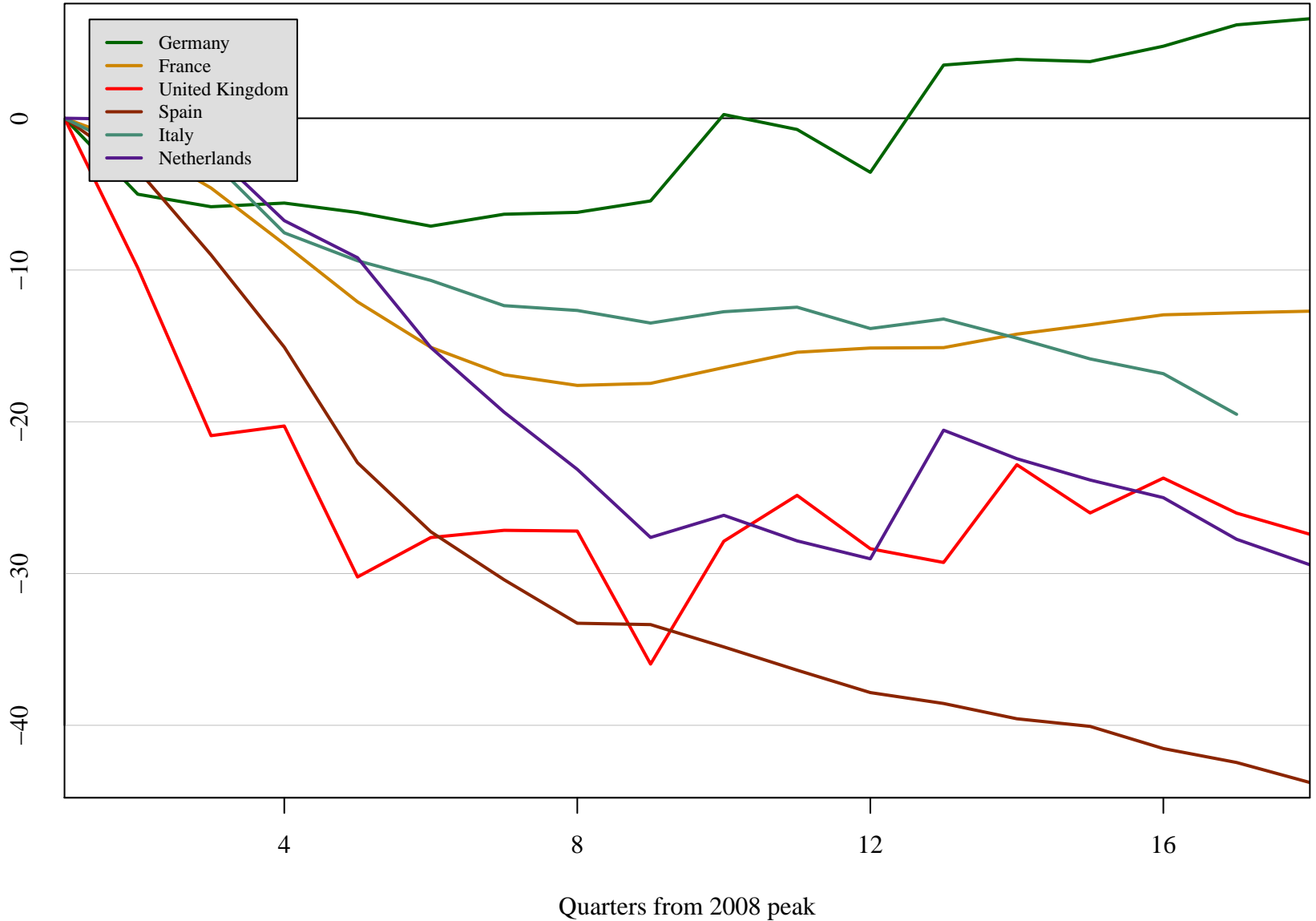
# Real Gross Capital Formation

Percentage change from 2008 peak, Seasonally Adjusted



# Real Residential Fixed Capital Formation

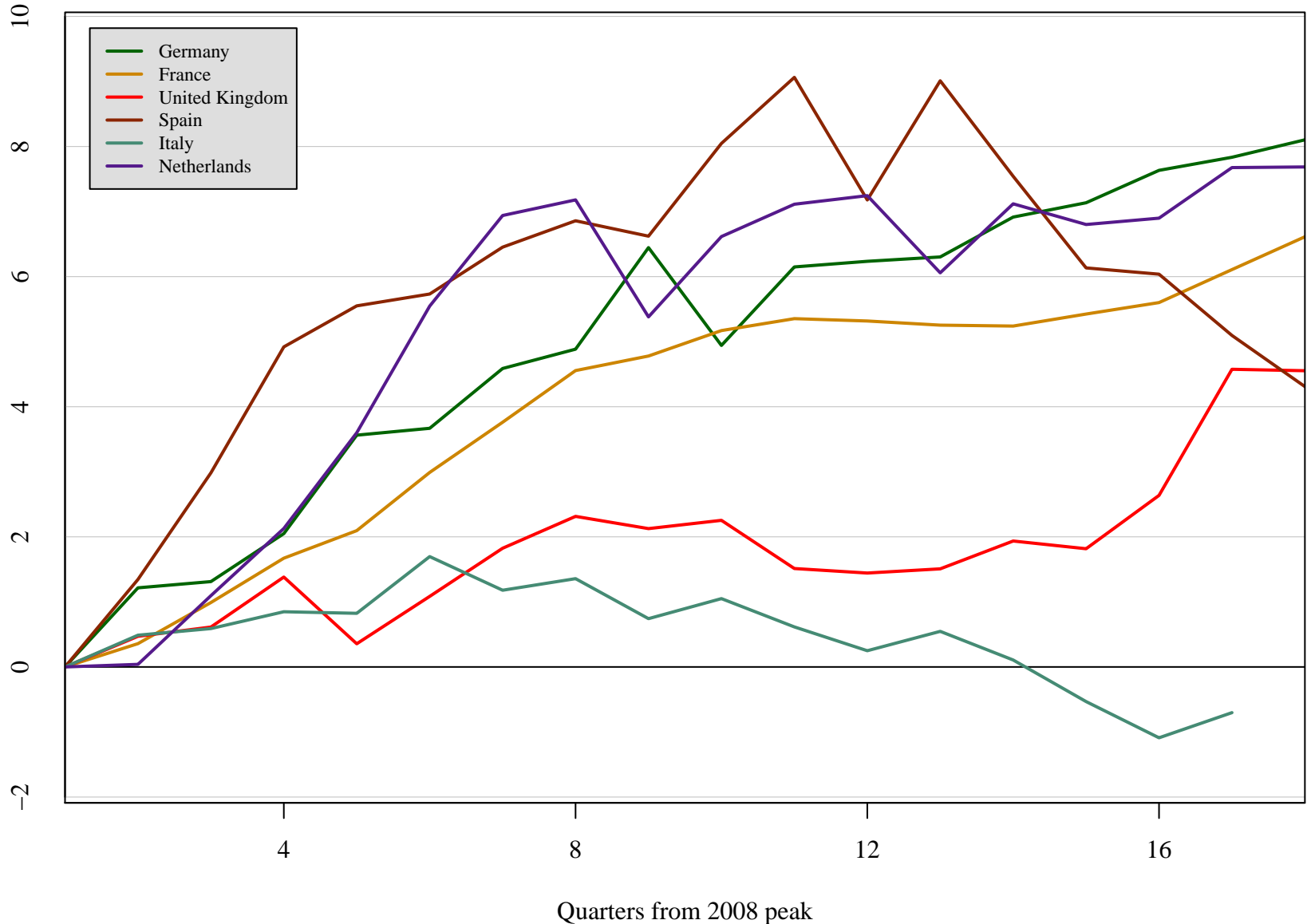
Percentage change from 2008 peak, Seasonally Adjusted





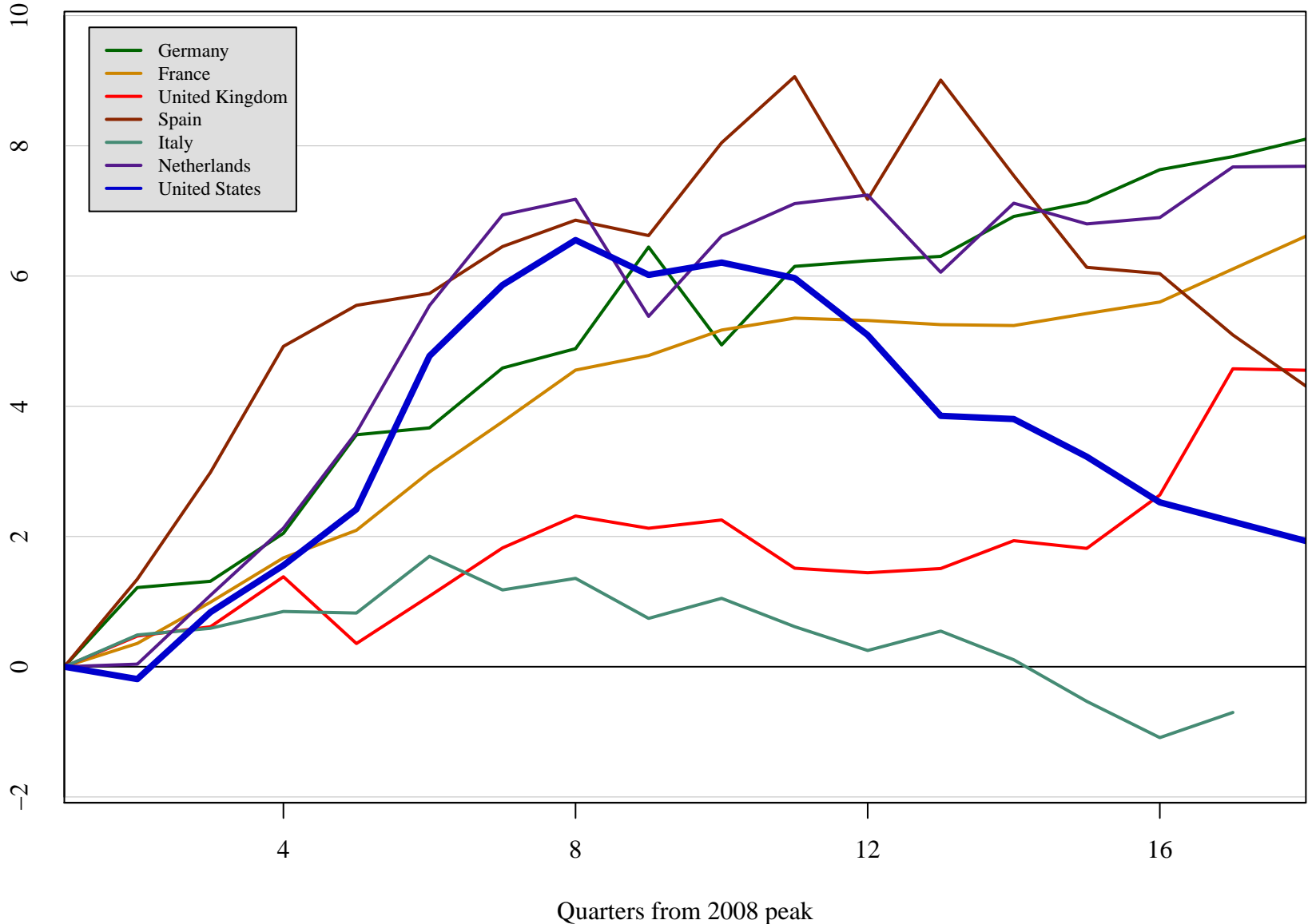
# Real Final Consumption Expenditures of Government

Percentage change from 2008 peak, Seasonally Adjusted



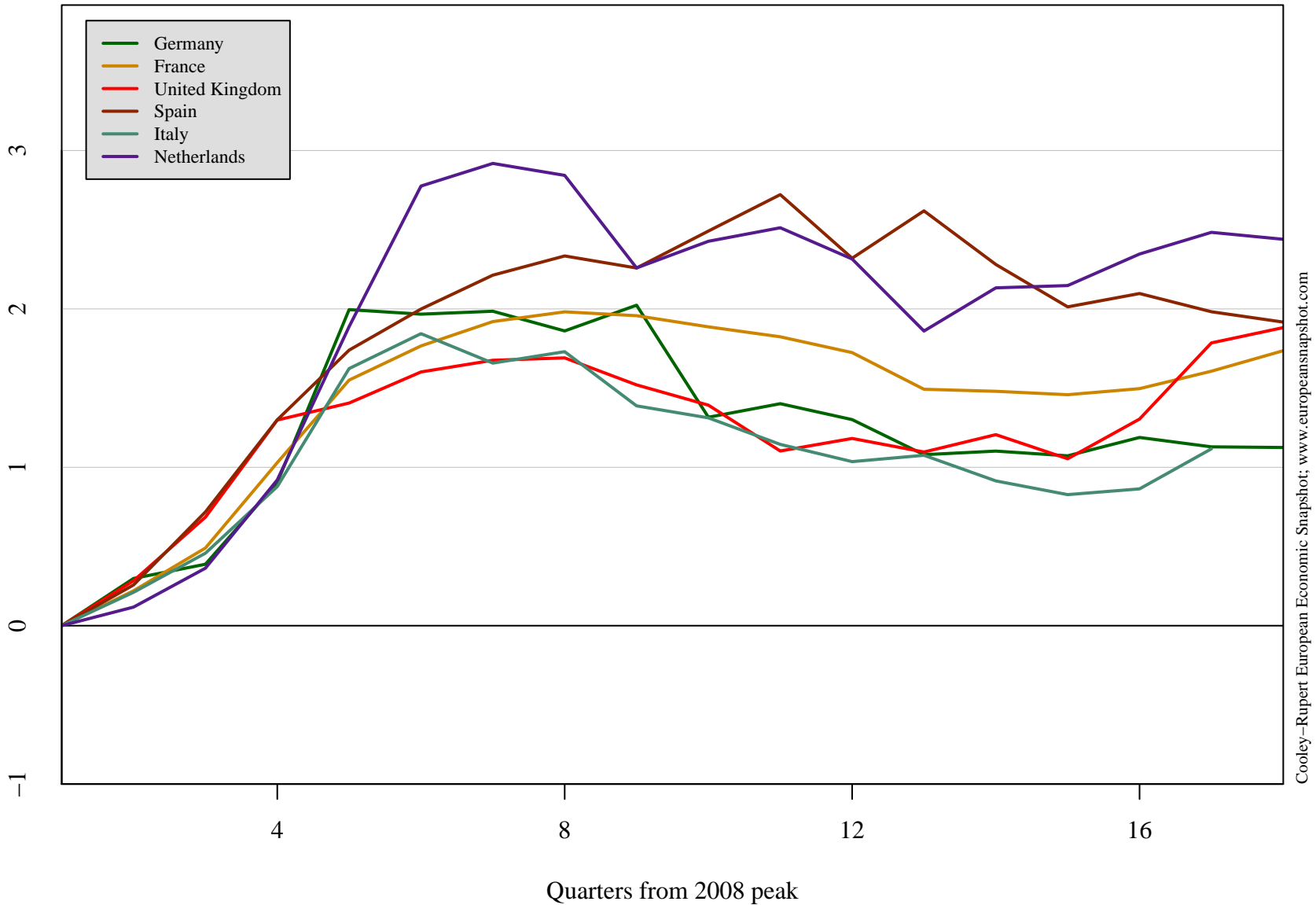
# Real Final Consumption Expenditures of Government

Percentage change from 2008 peak, Seasonally Adjusted



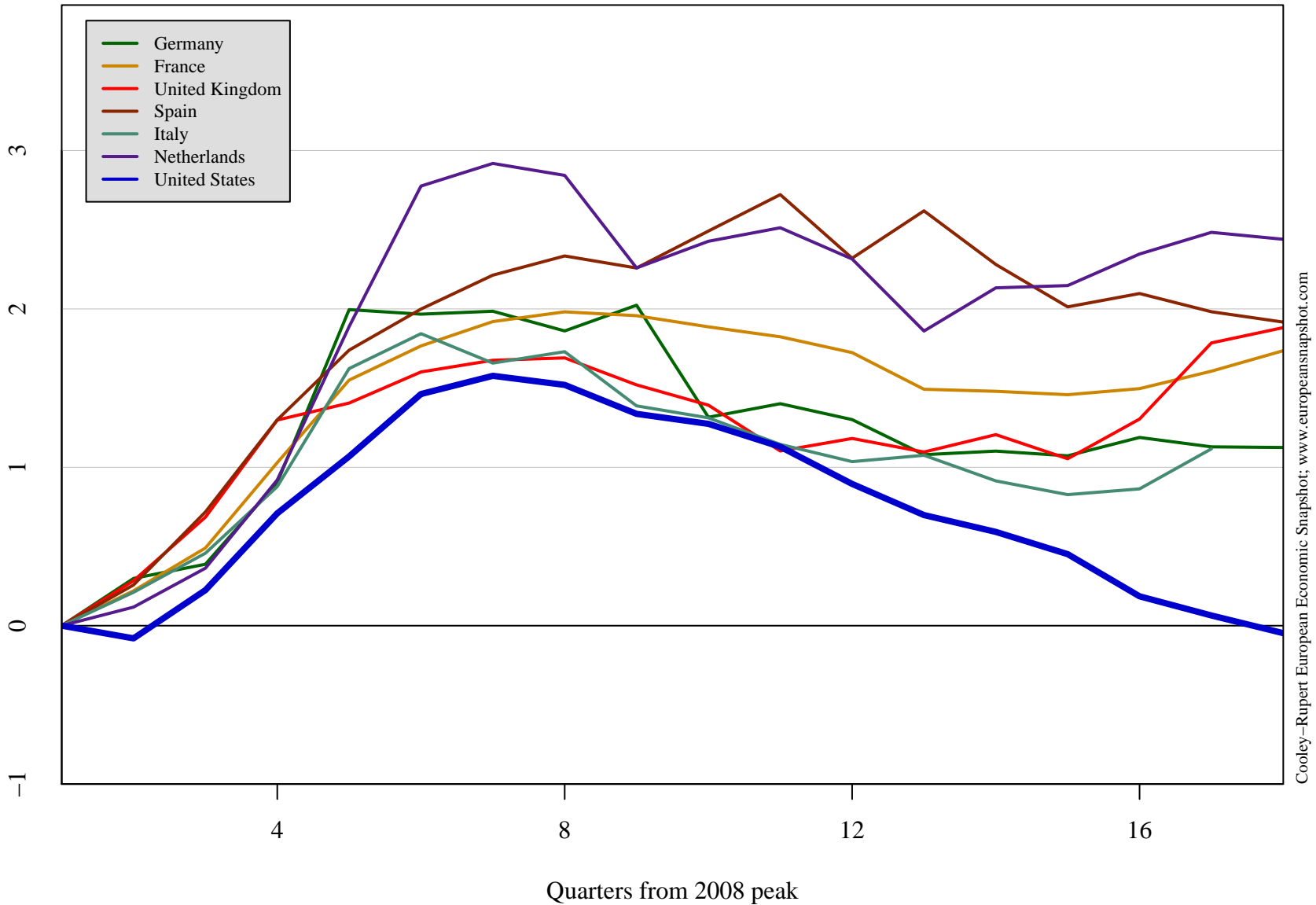
# Real Final Consumption Expenditures of Government (% of GDP)

Change from 2008 peak, Seasonally Adjusted



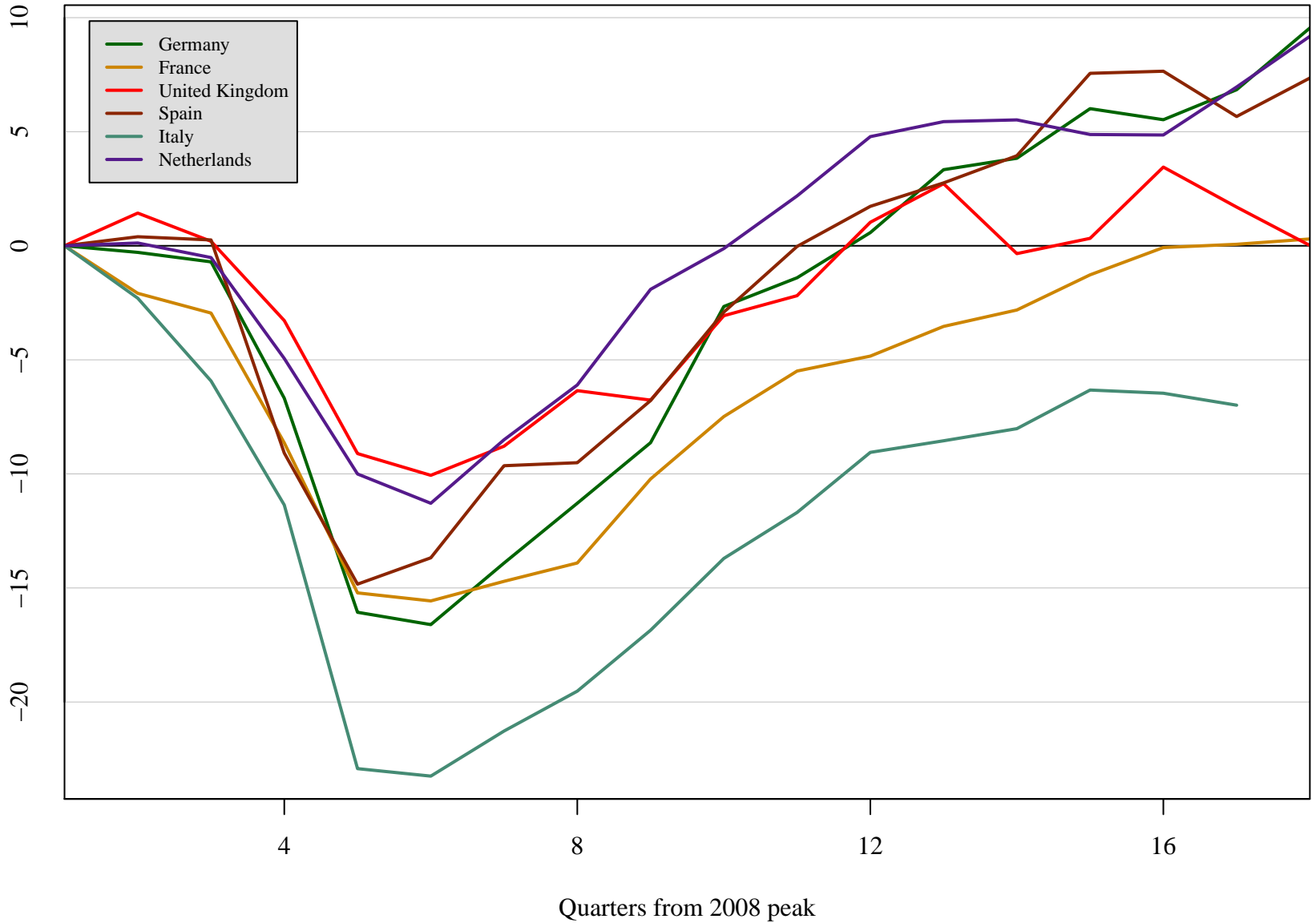
# Real Final Consumption Expenditures of Government (% of GDP)

Change from 2008 peak, Seasonally Adjusted



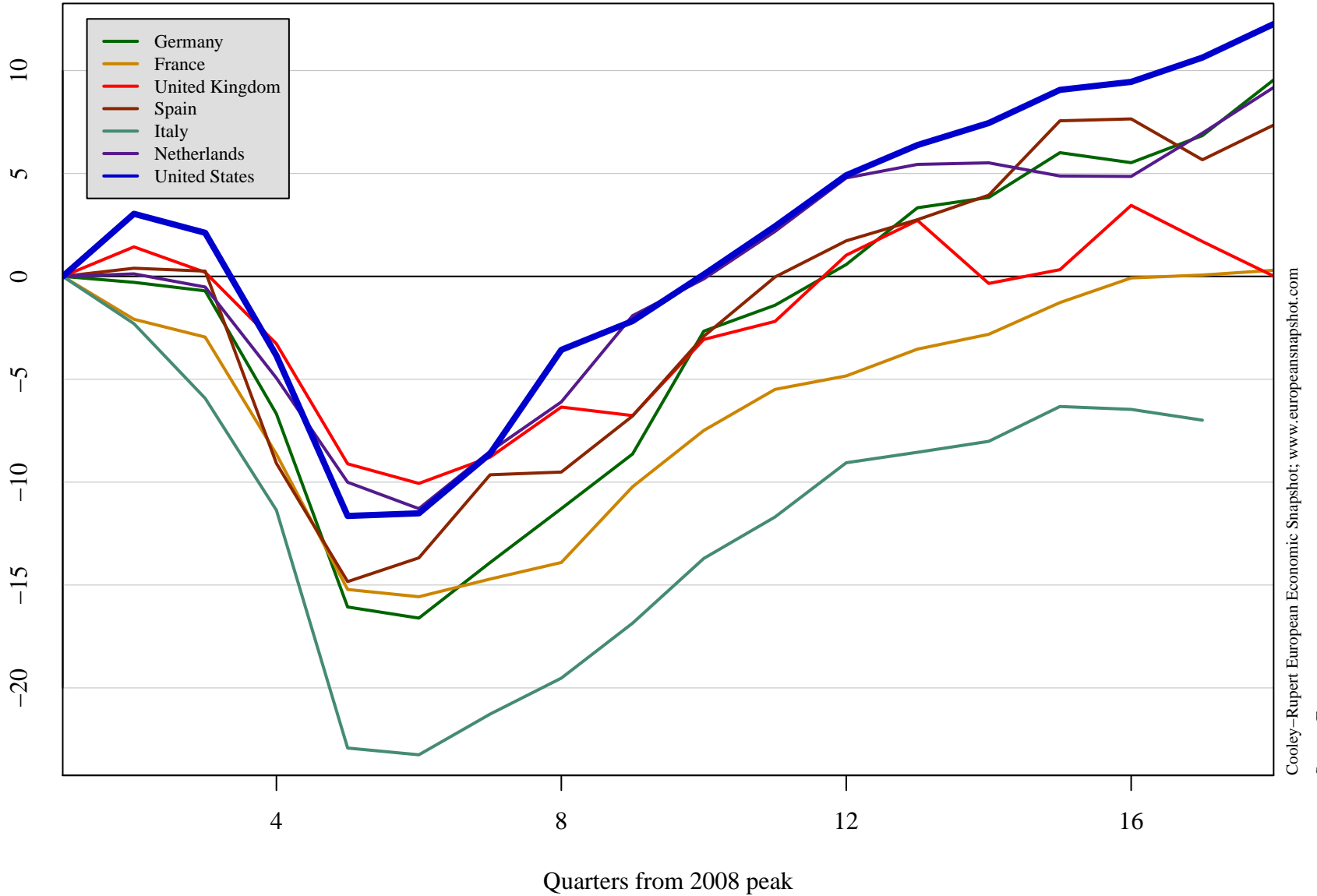
# Real Exports

Percentage change from 2008 peak, Seasonally Adjusted



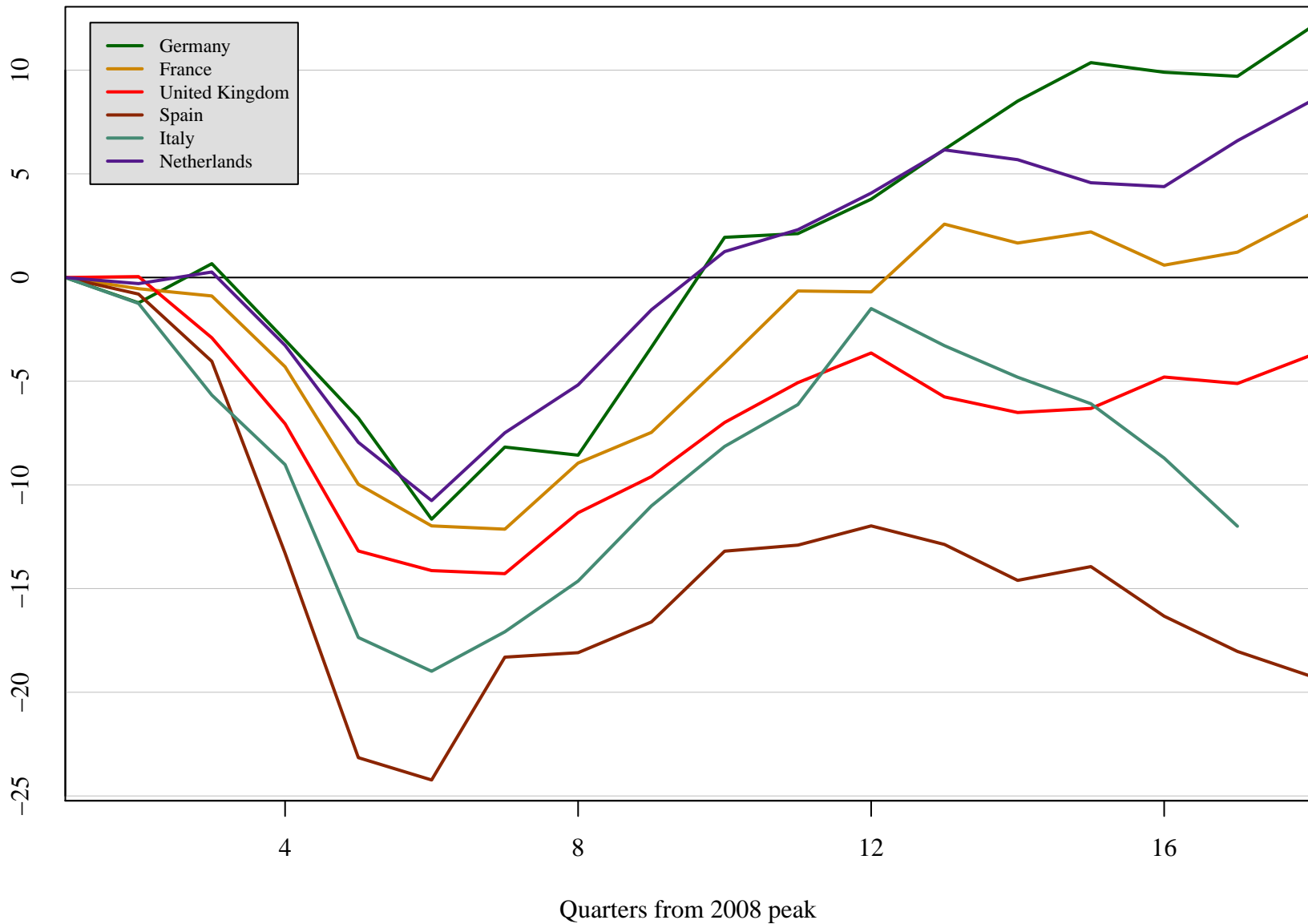
# Real Exports

Percentage change from 2008 peak, Seasonally Adjusted



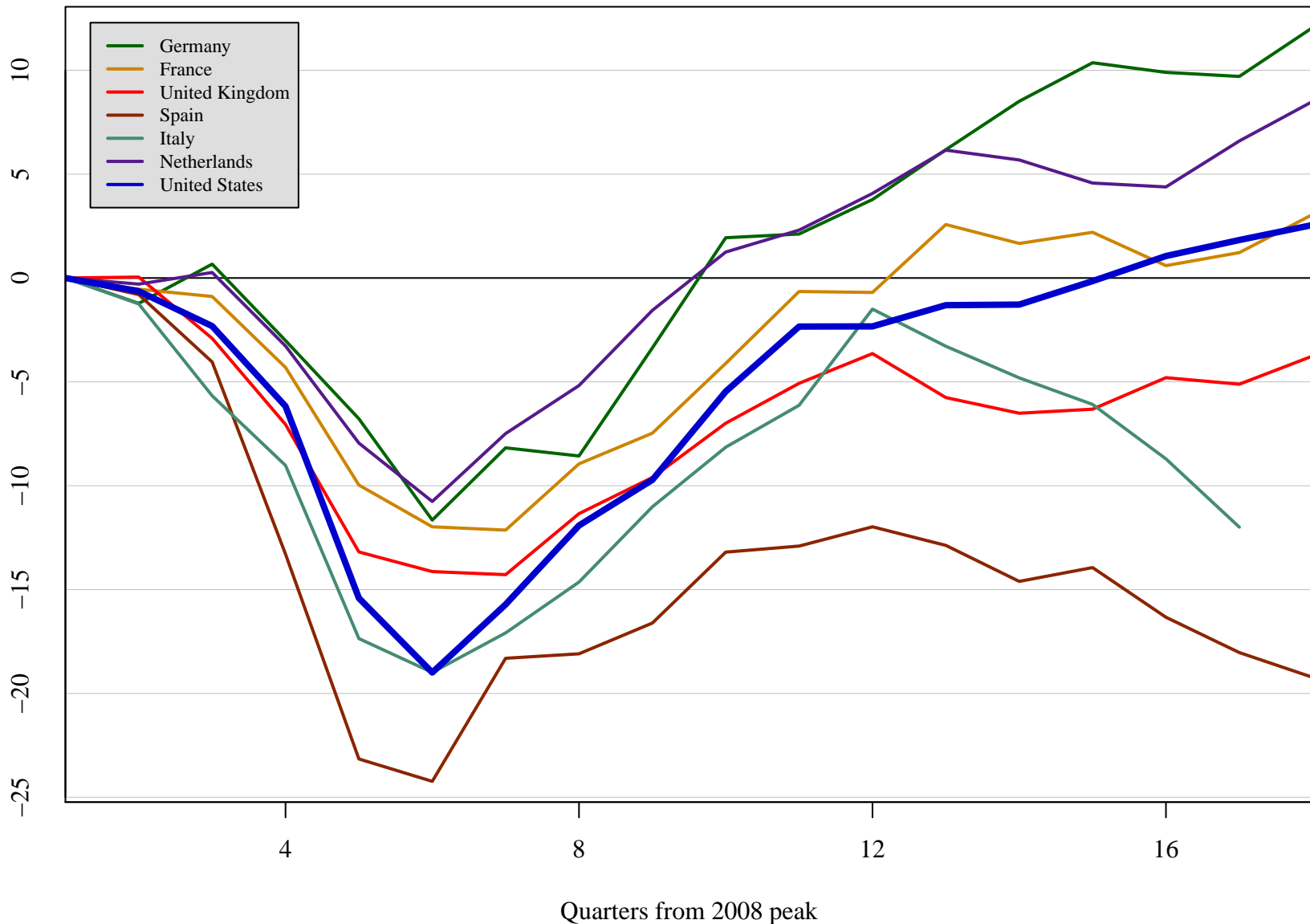
# Real Imports

Percentage change from 2008 peak, Seasonally Adjusted



# Real Imports

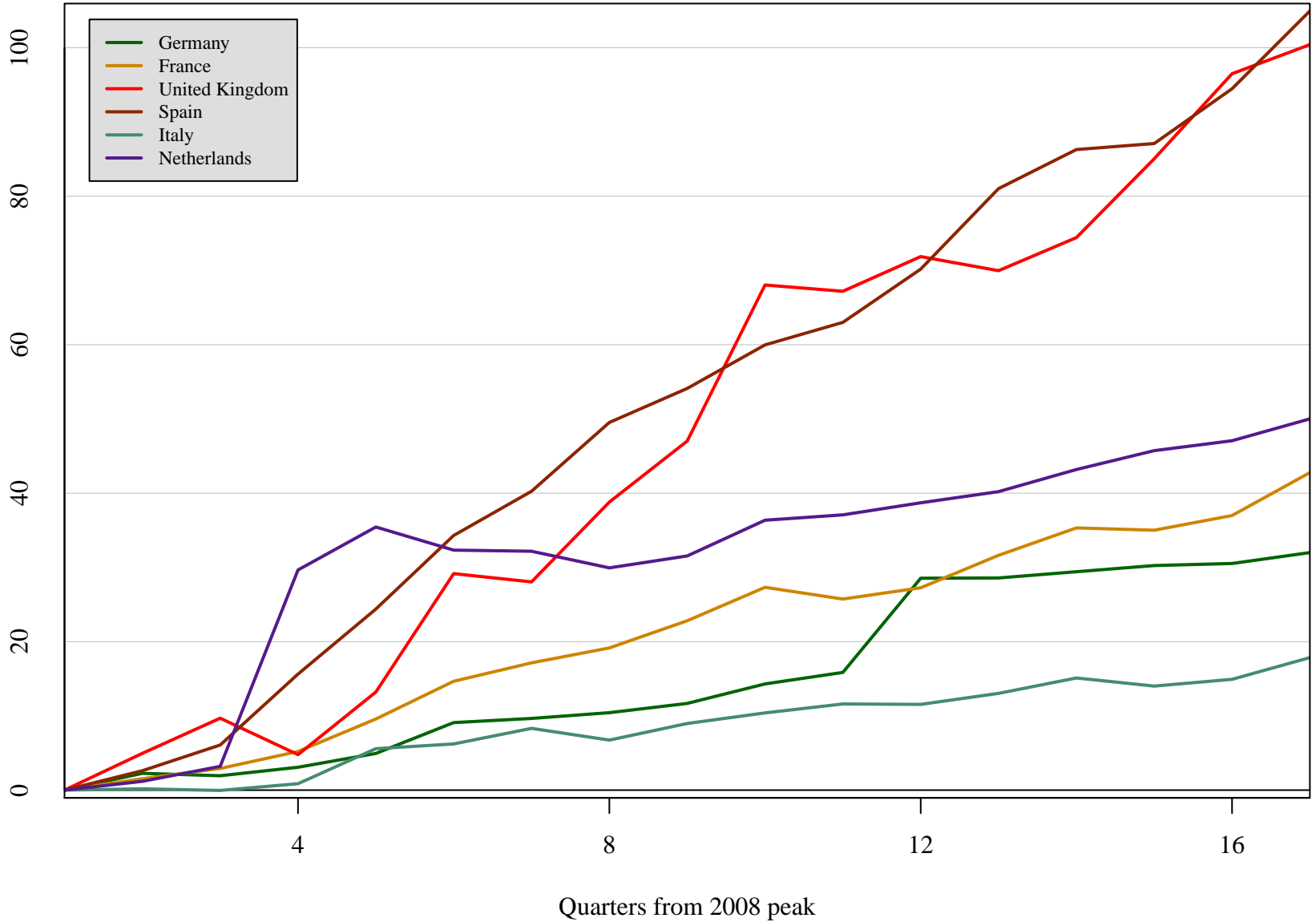
Percentage change from 2008 peak, Seasonally Adjusted





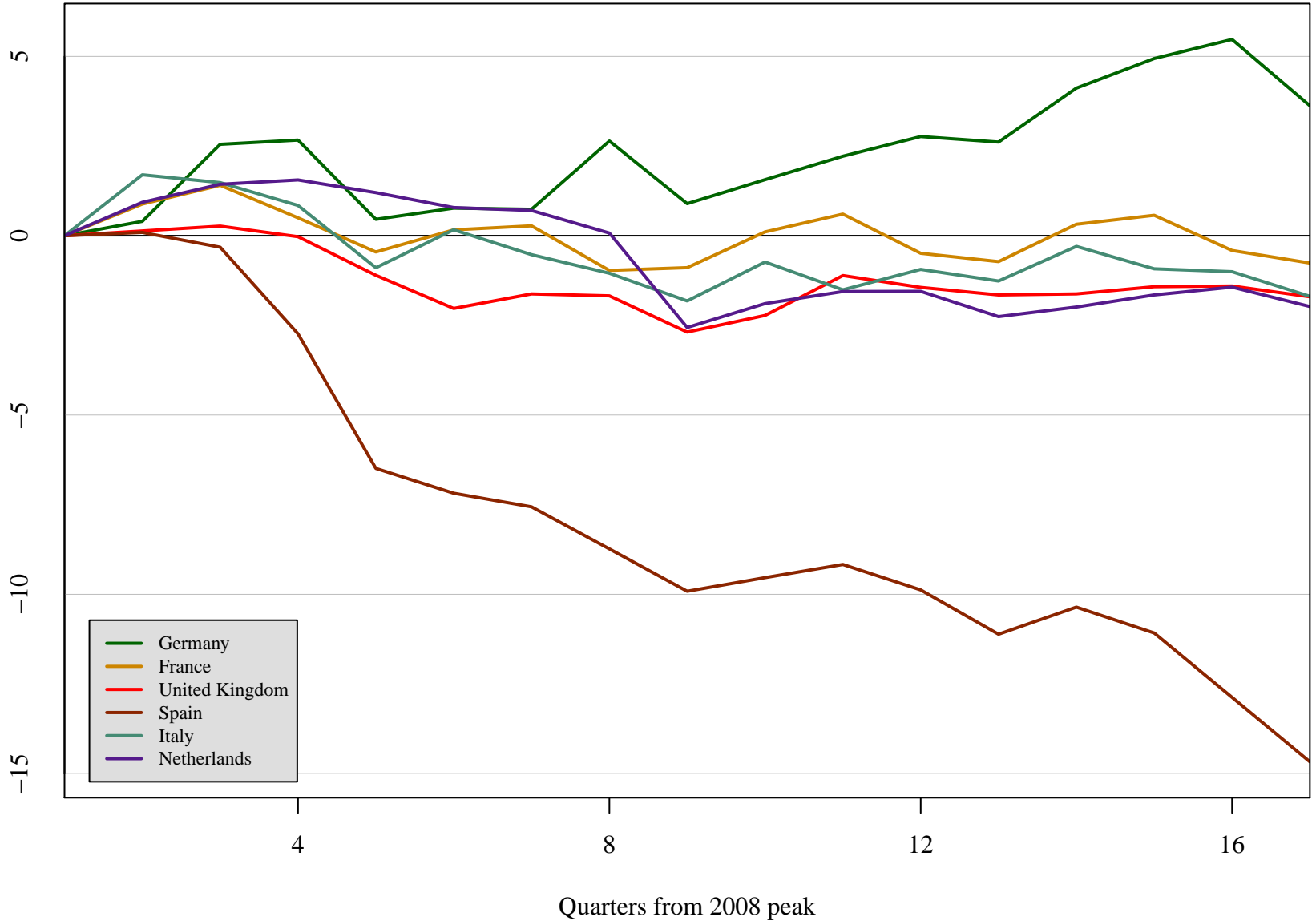
# Government Consolidated Gross Debt

Percentage change from 2008 peak



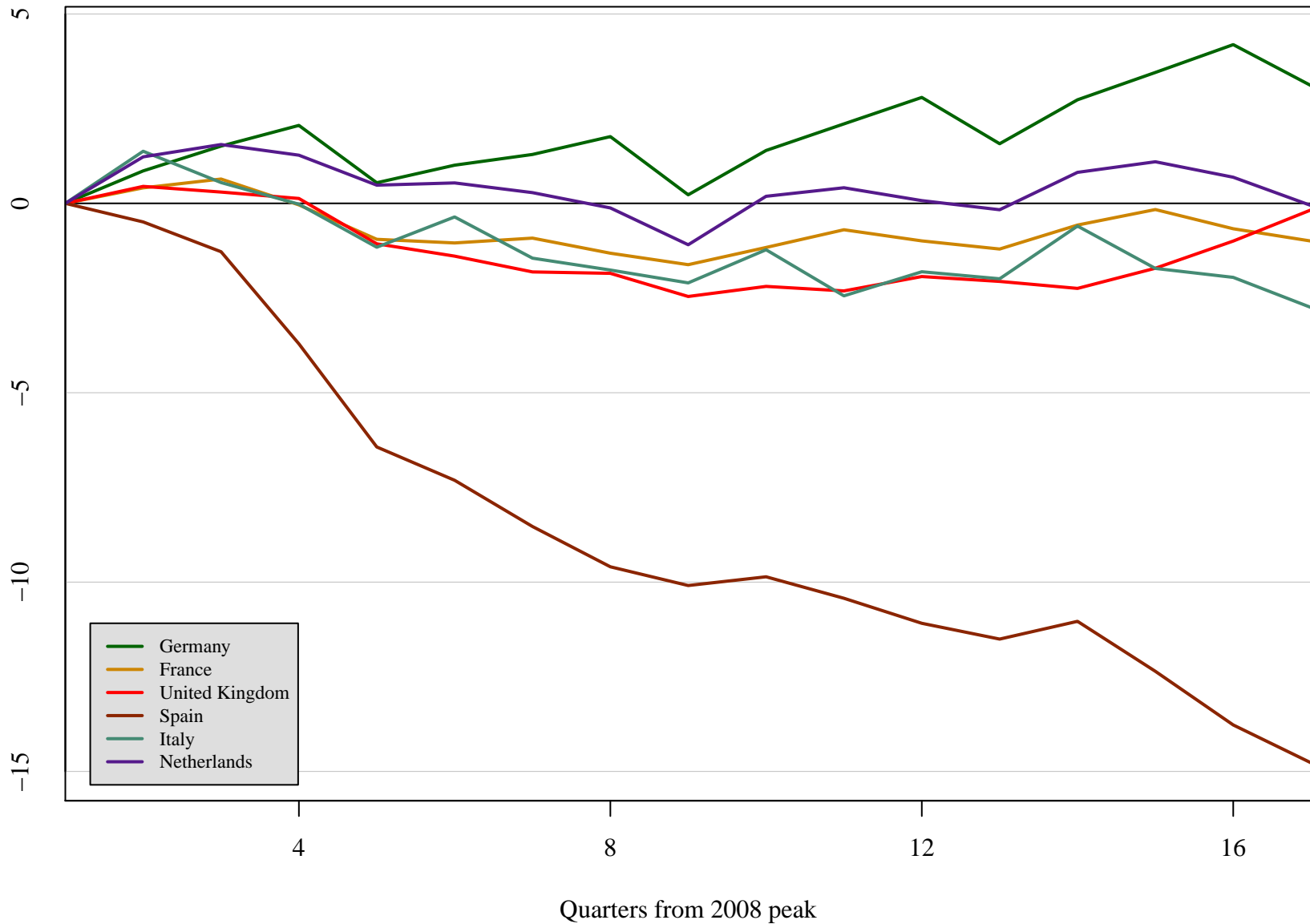
# Total Employment – Labour Force Survey

Percentage change from 2008 peak, Resident Population Concept



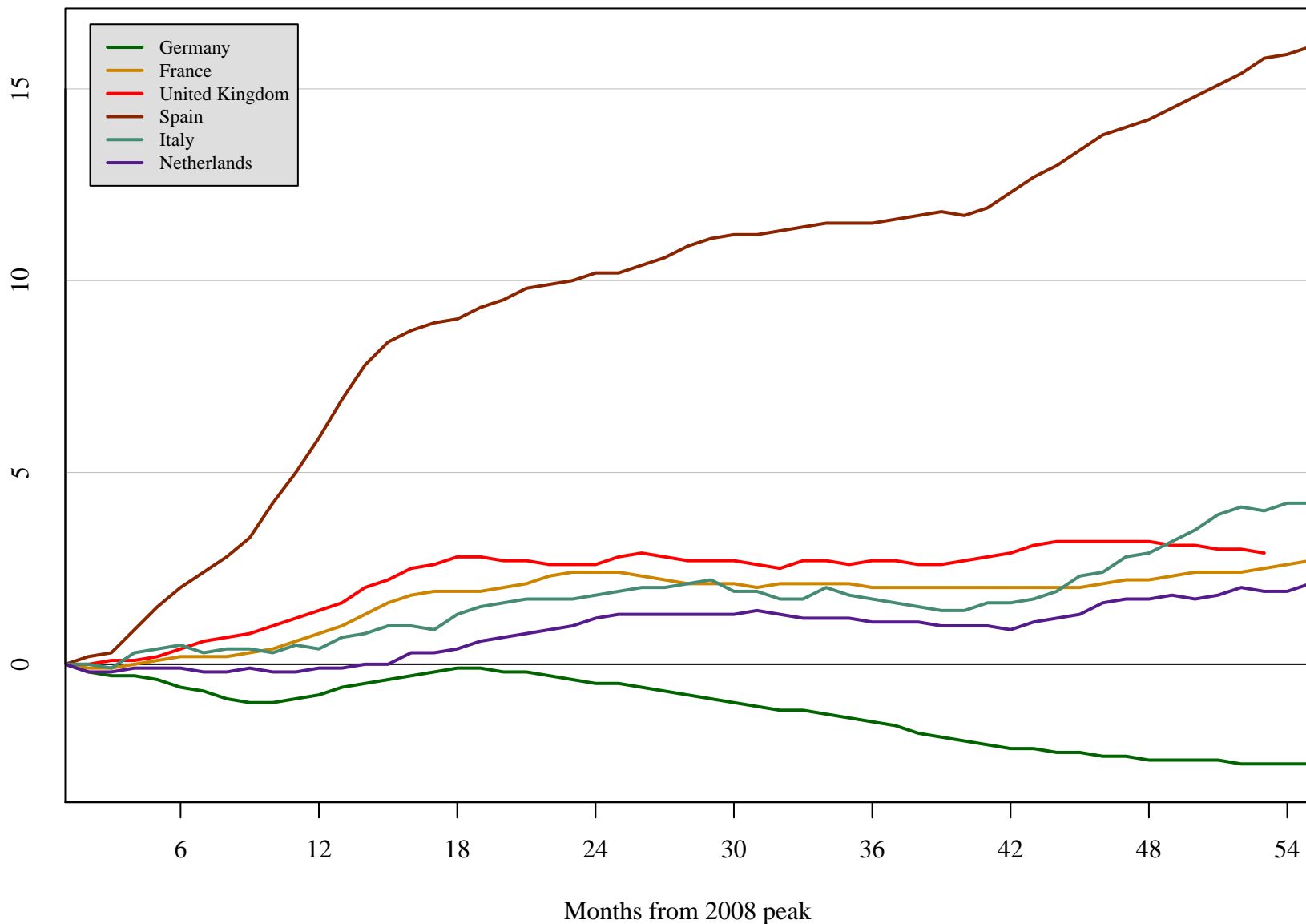
# Total Employment – National Accounts

Percentage change from 2008 peak, Domestic Concept



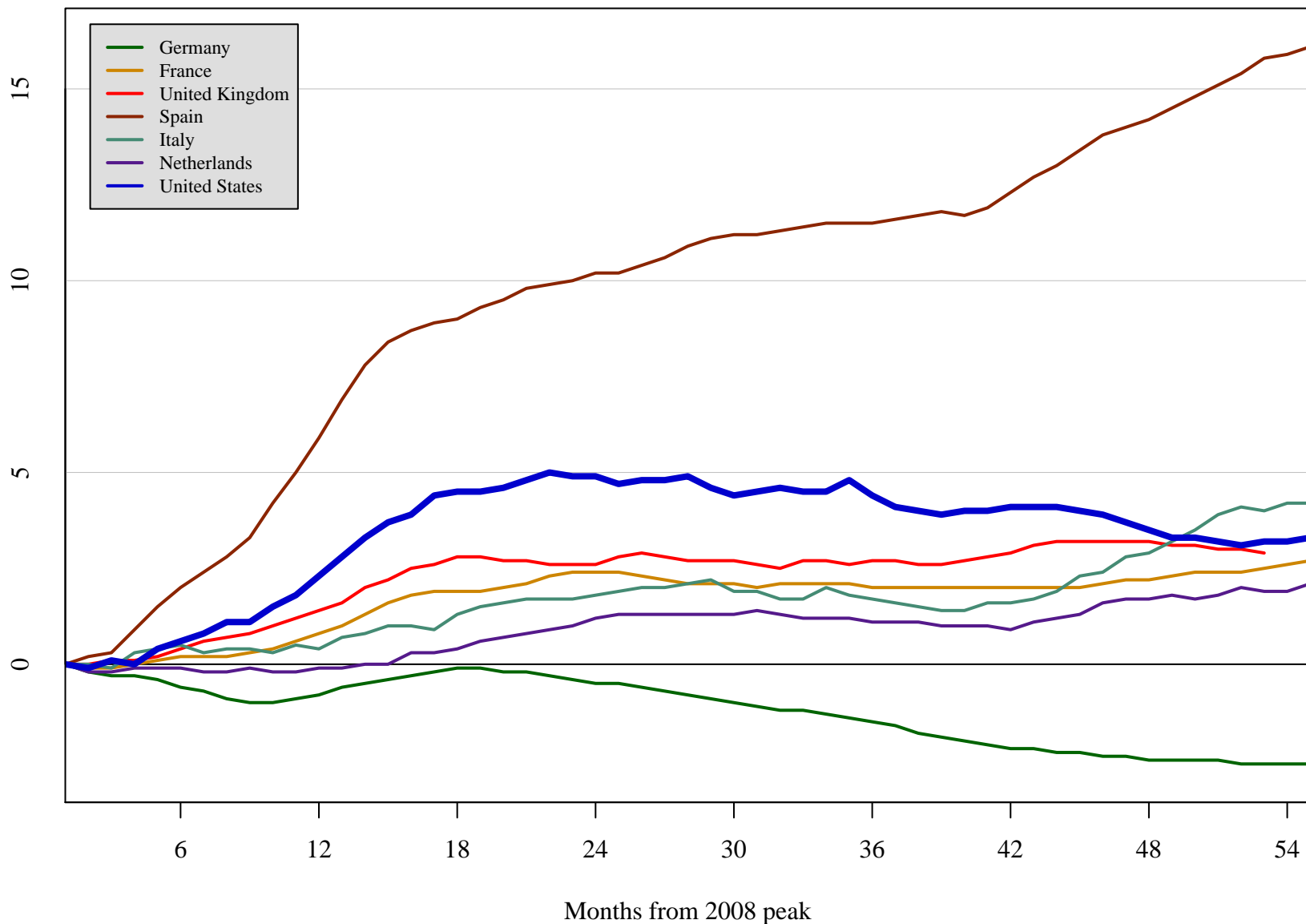
# Unemployment Rate

Percentage point change from 2008 peak, Seasonally Adjusted



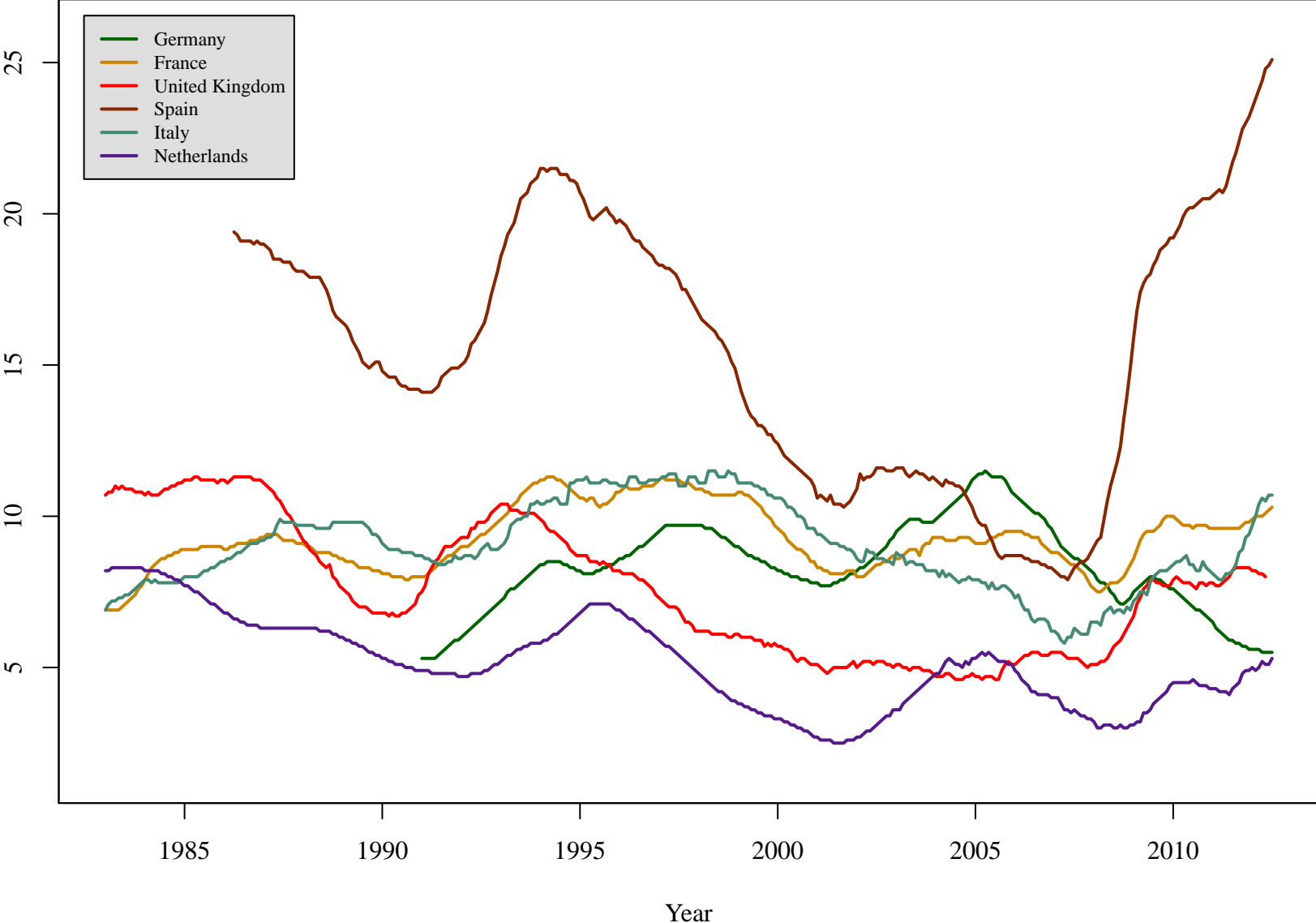
# Unemployment Rate

Percentage point change from 2008 peak, Seasonally Adjusted



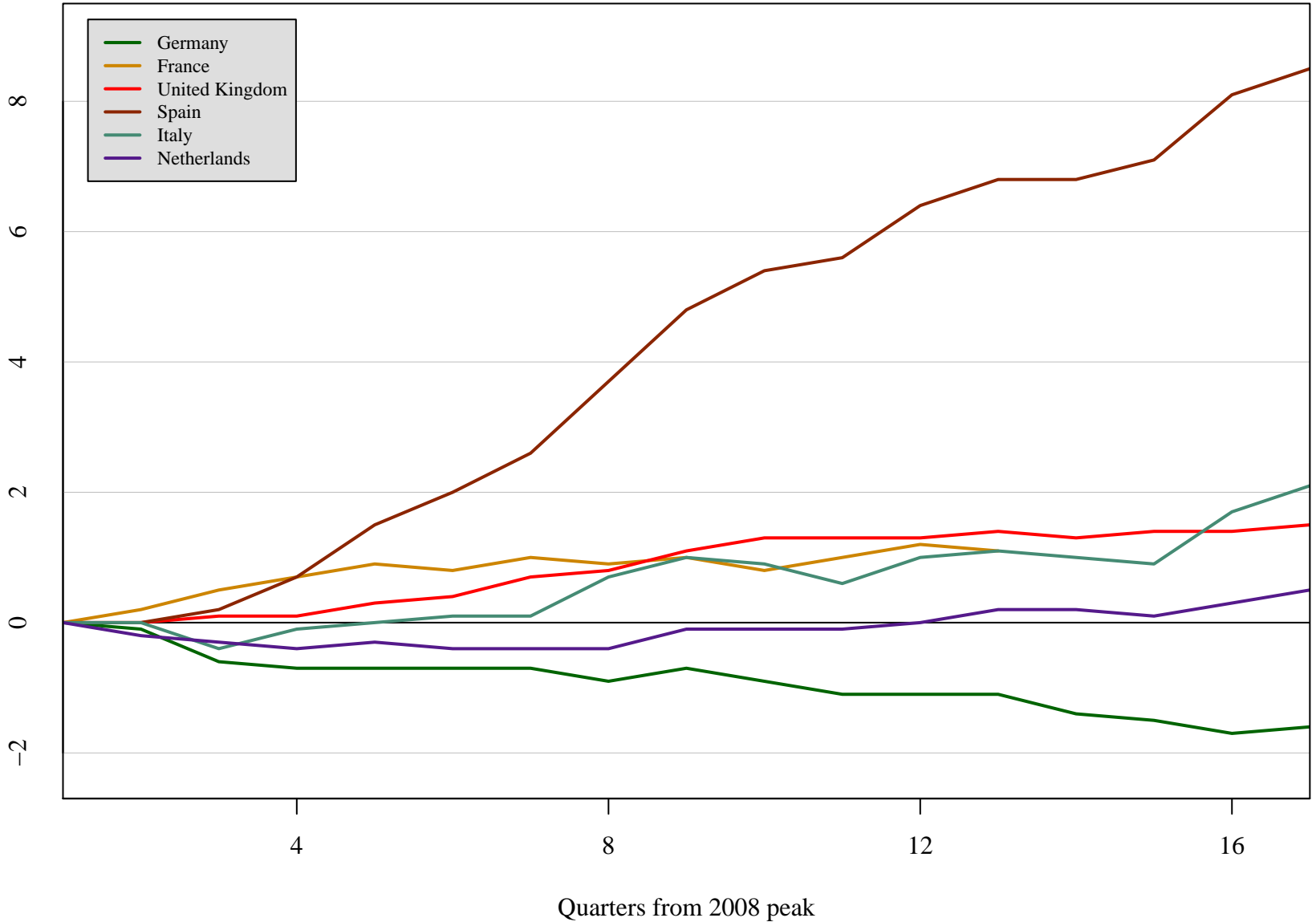
# Unemployment Rate – Level

Seasonally Adjusted



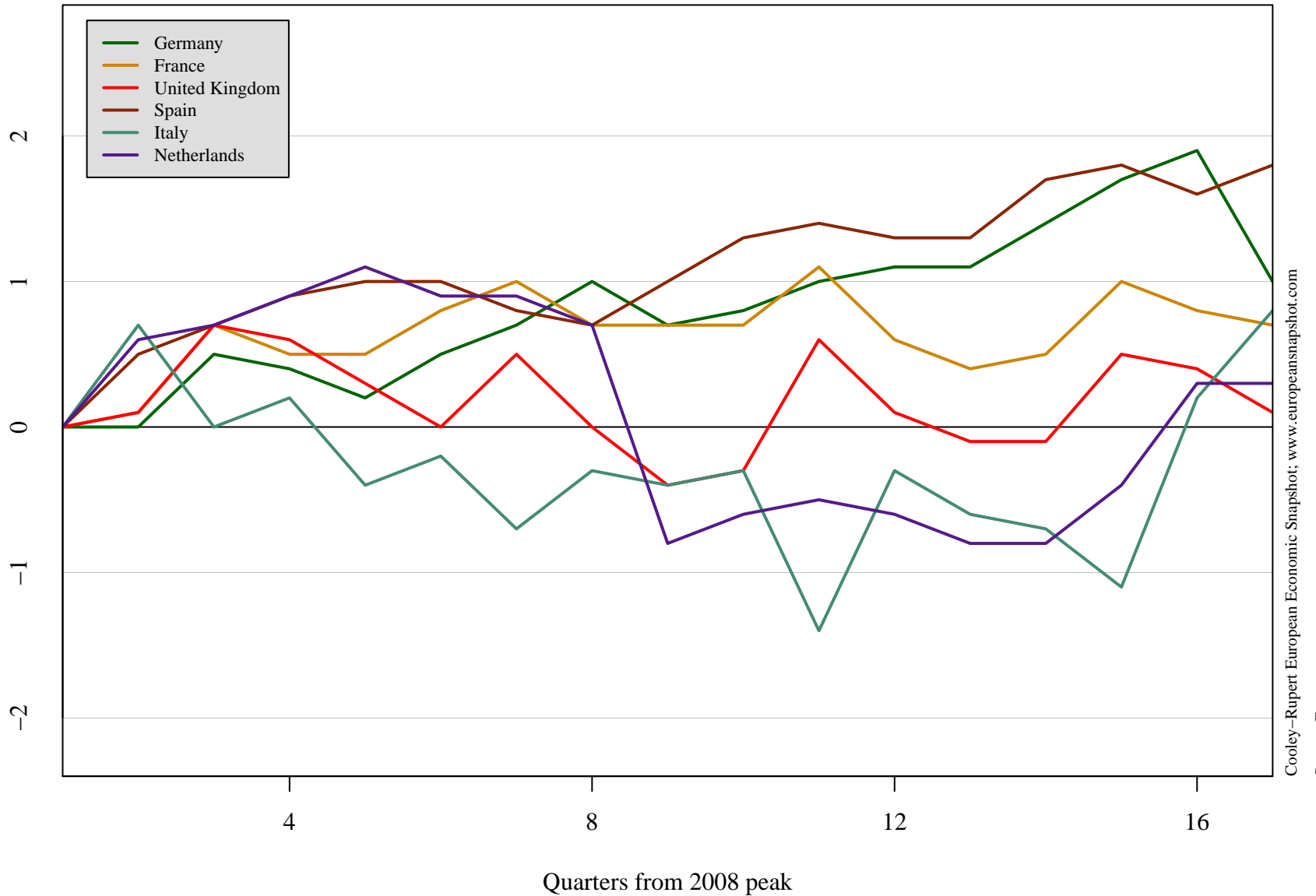
# Long-term Unemployment Rate

Percentage point change from 2008 peak, Unemployed for over 12 months



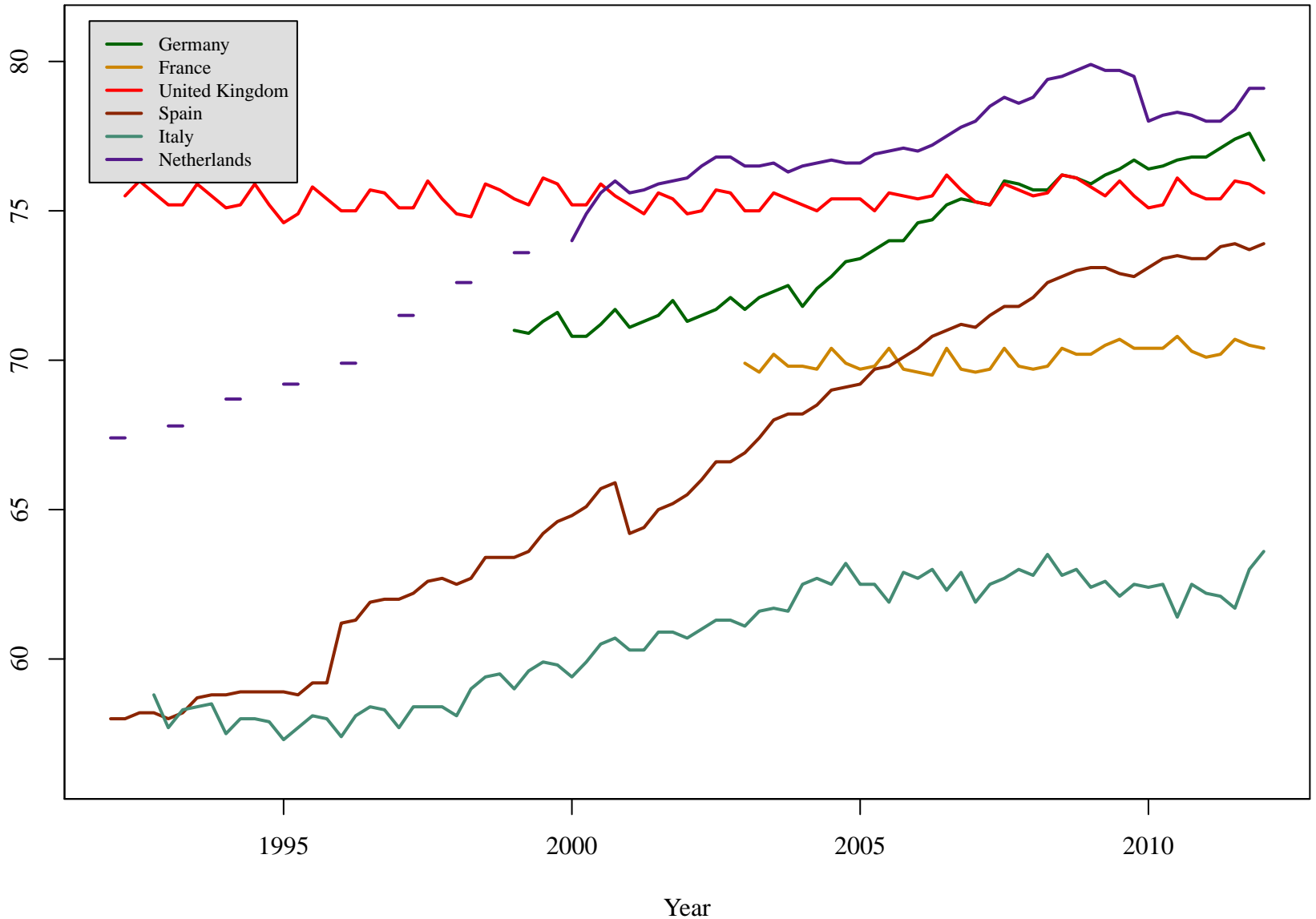
# Labor Force Participation Rate (Ages 15–64)

Percentage point change from 2008 peak



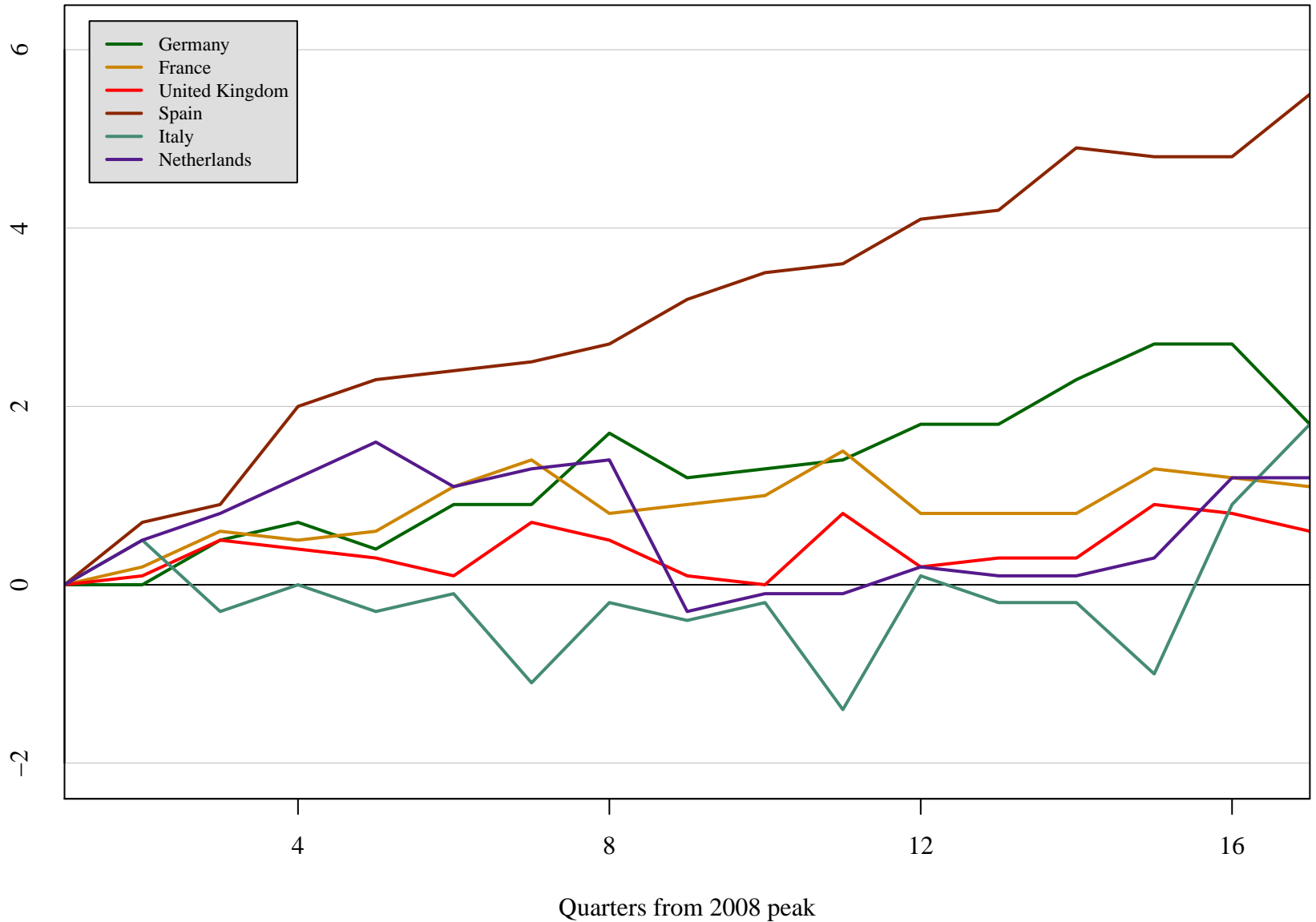


# Labor Force Participation Rate (Ages 15–64)

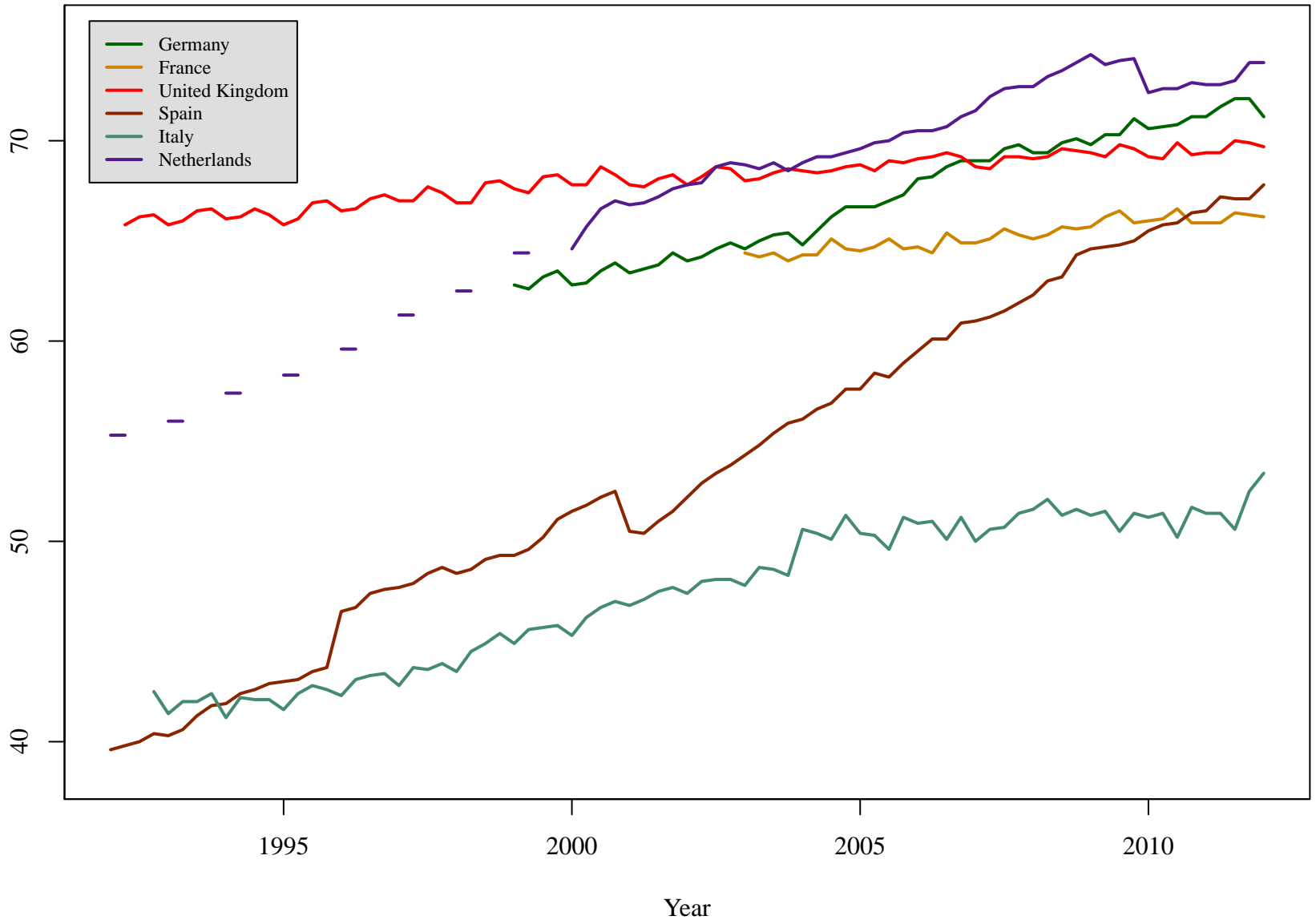


# Female Labor Force Participation Rate (Ages 15–64)

Percentage point change from 2008 peak

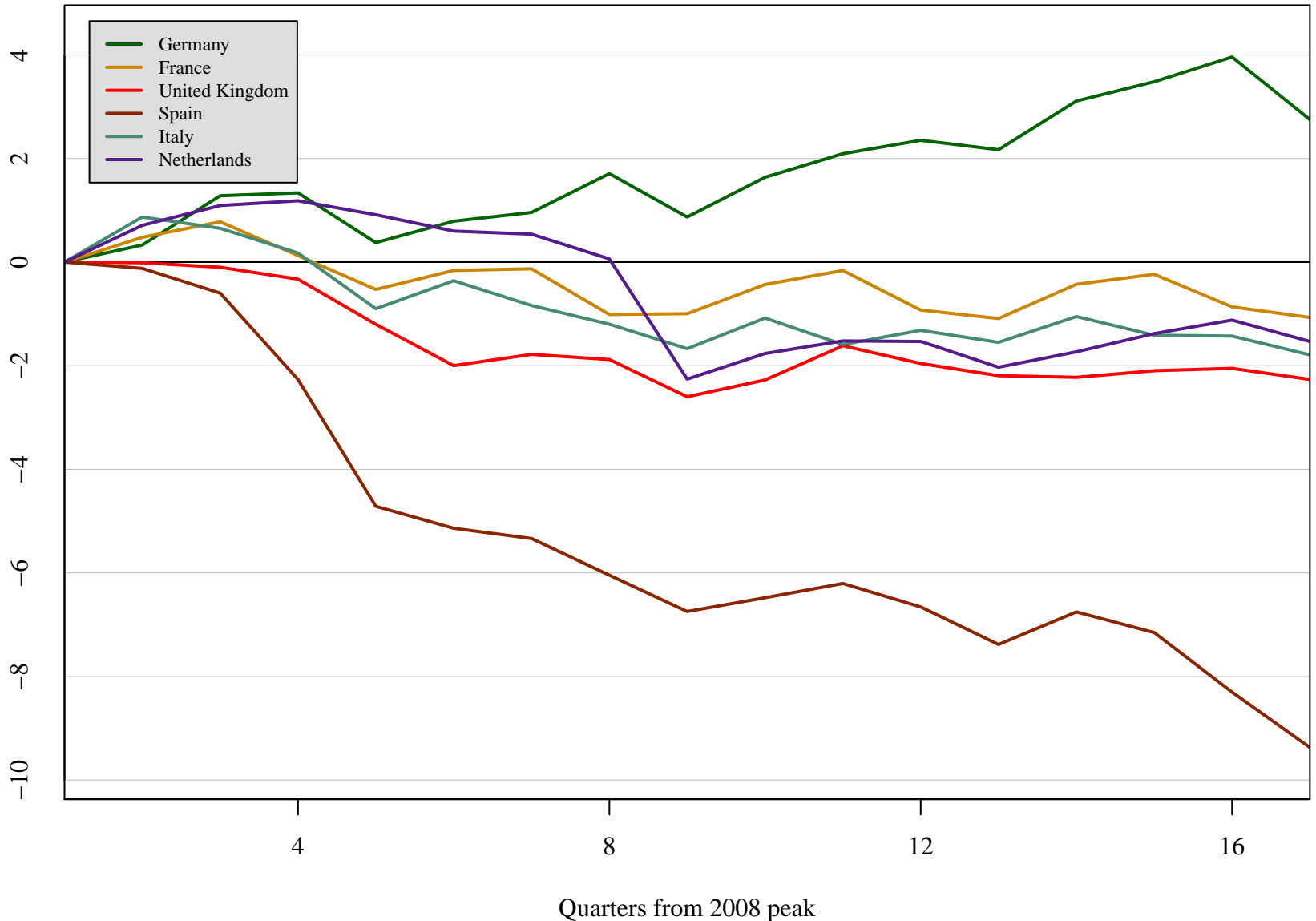


## Female Labor Force Participation Rate (Ages 15–64)



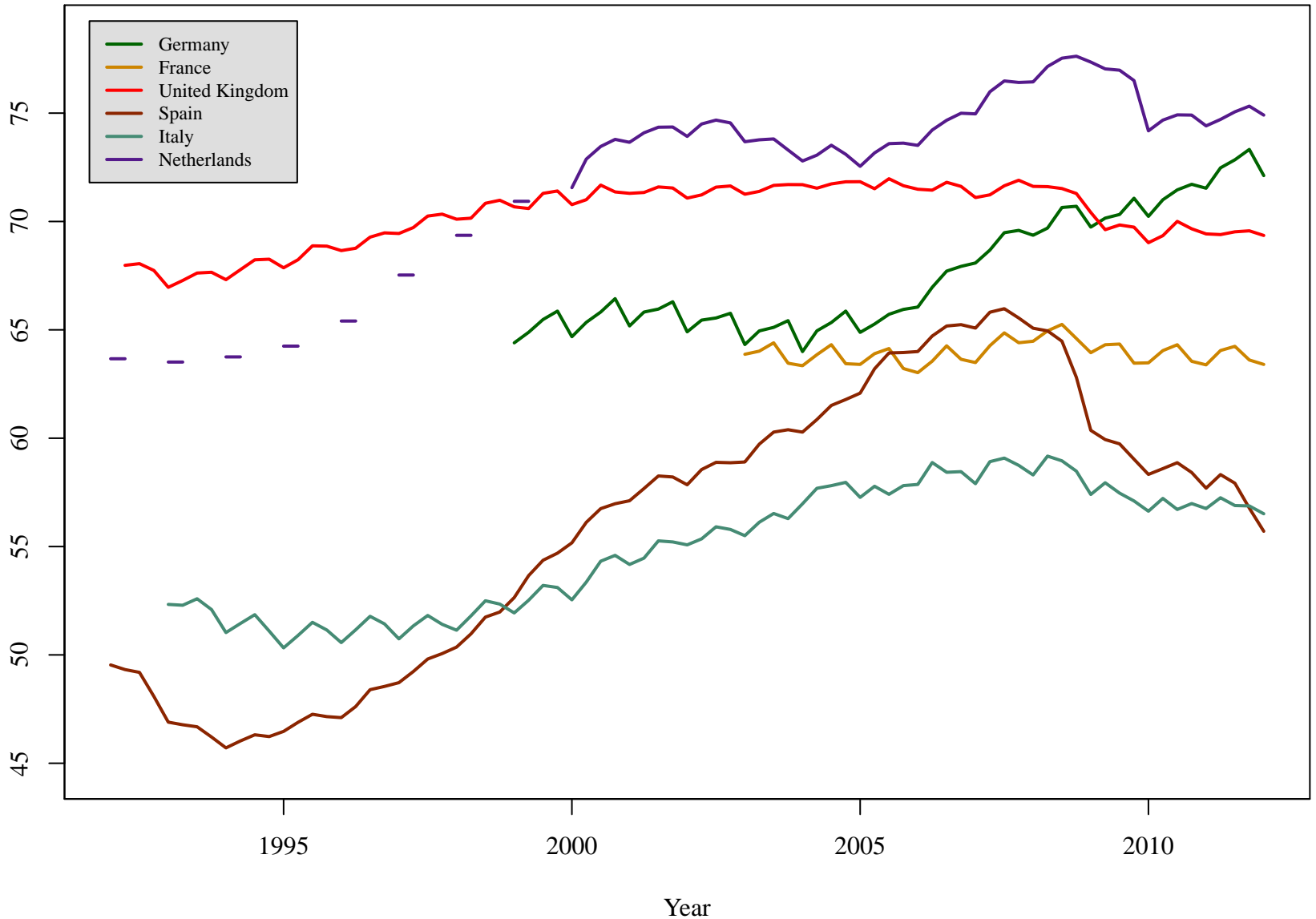
# Employment Population Ratio (Ages 15–64)

Percentage point change from 2008 peak, Resident Population Concept



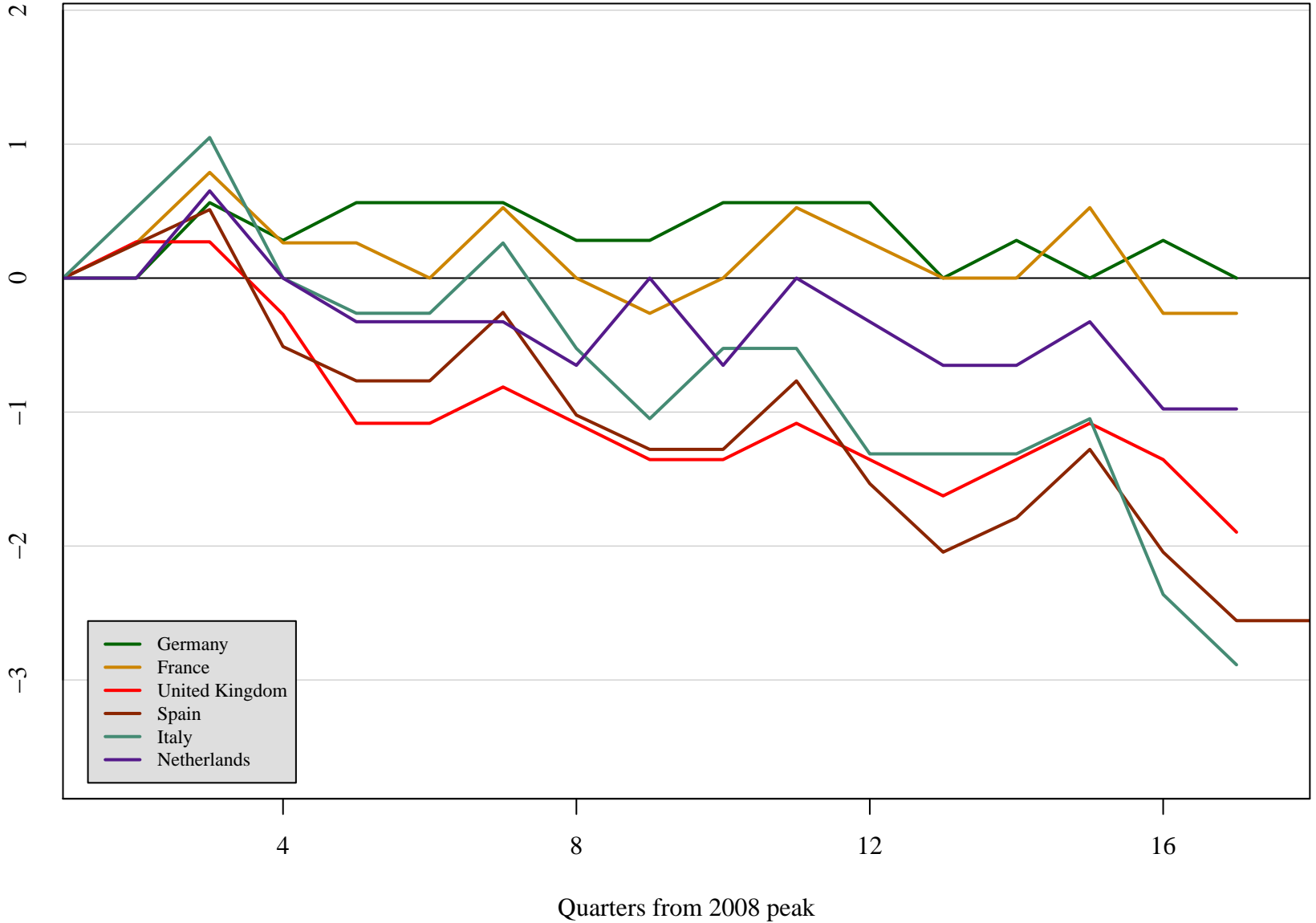
# Employment Population Ratio (Ages 15–64)

Resident Population Concept



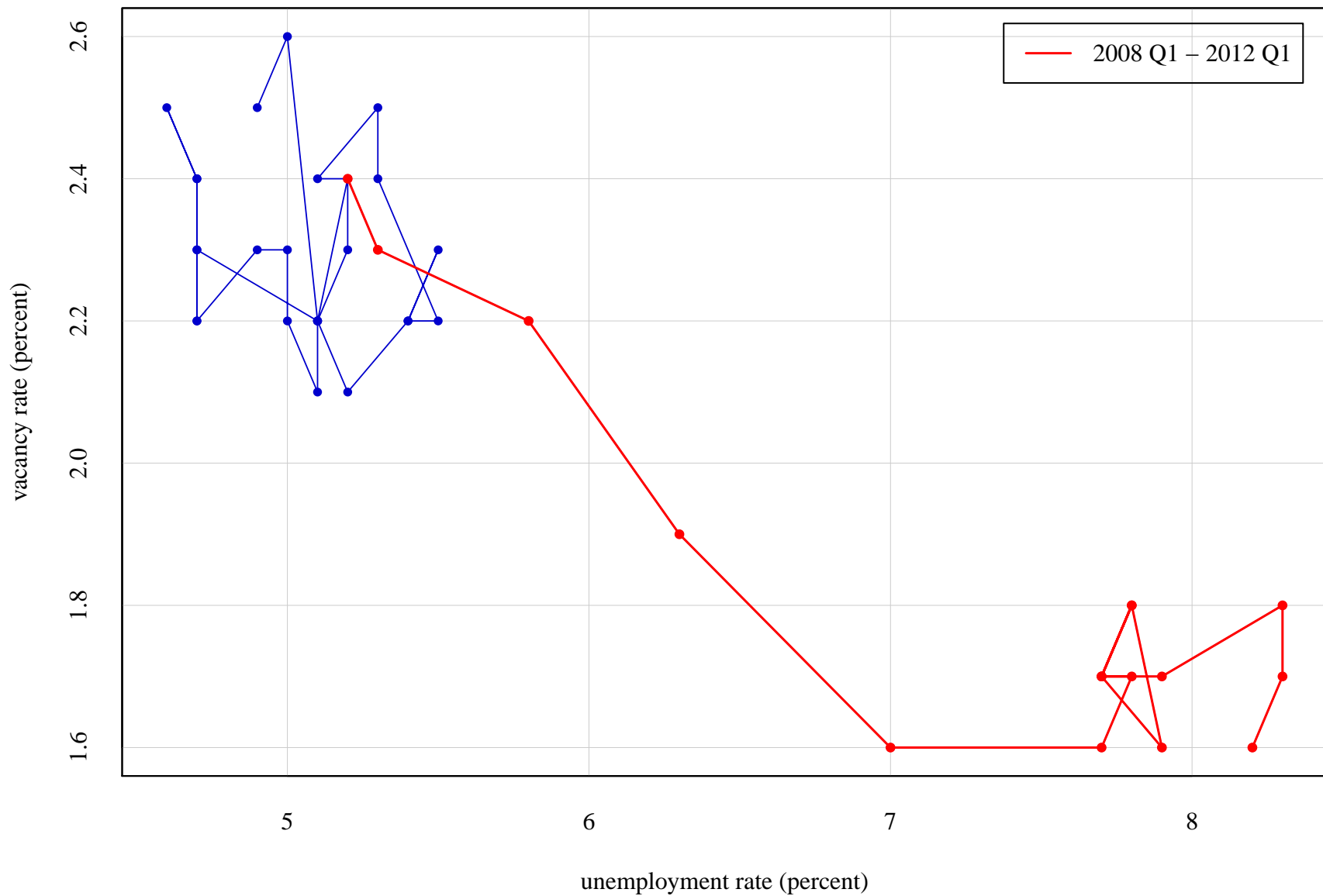
# Average Number of Weekly Hours Worked

Percentage change from 2008 peak



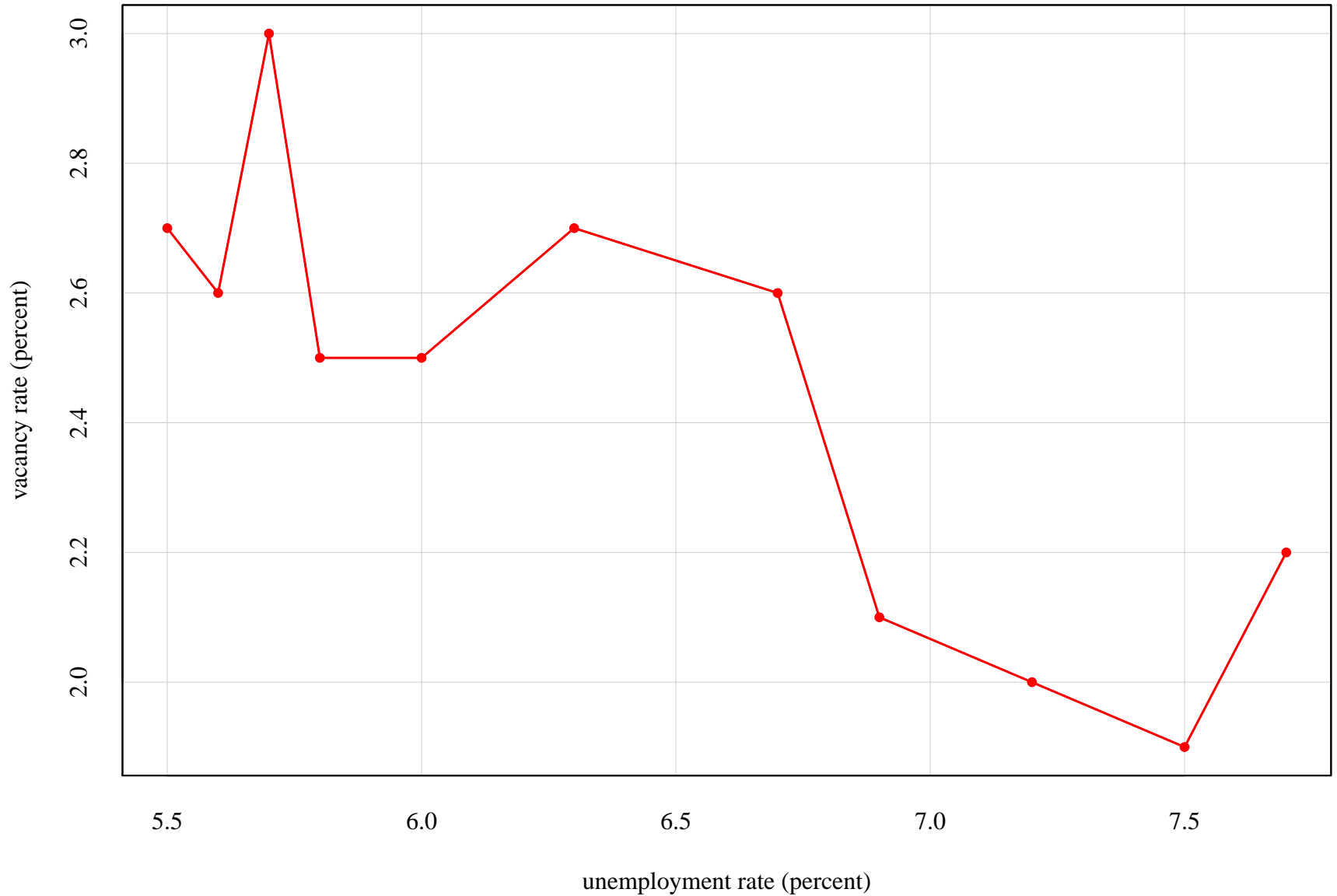
# U.K. Beveridge Curve

2001 Q2 – 2012 Q1



# German Beveridge Curve

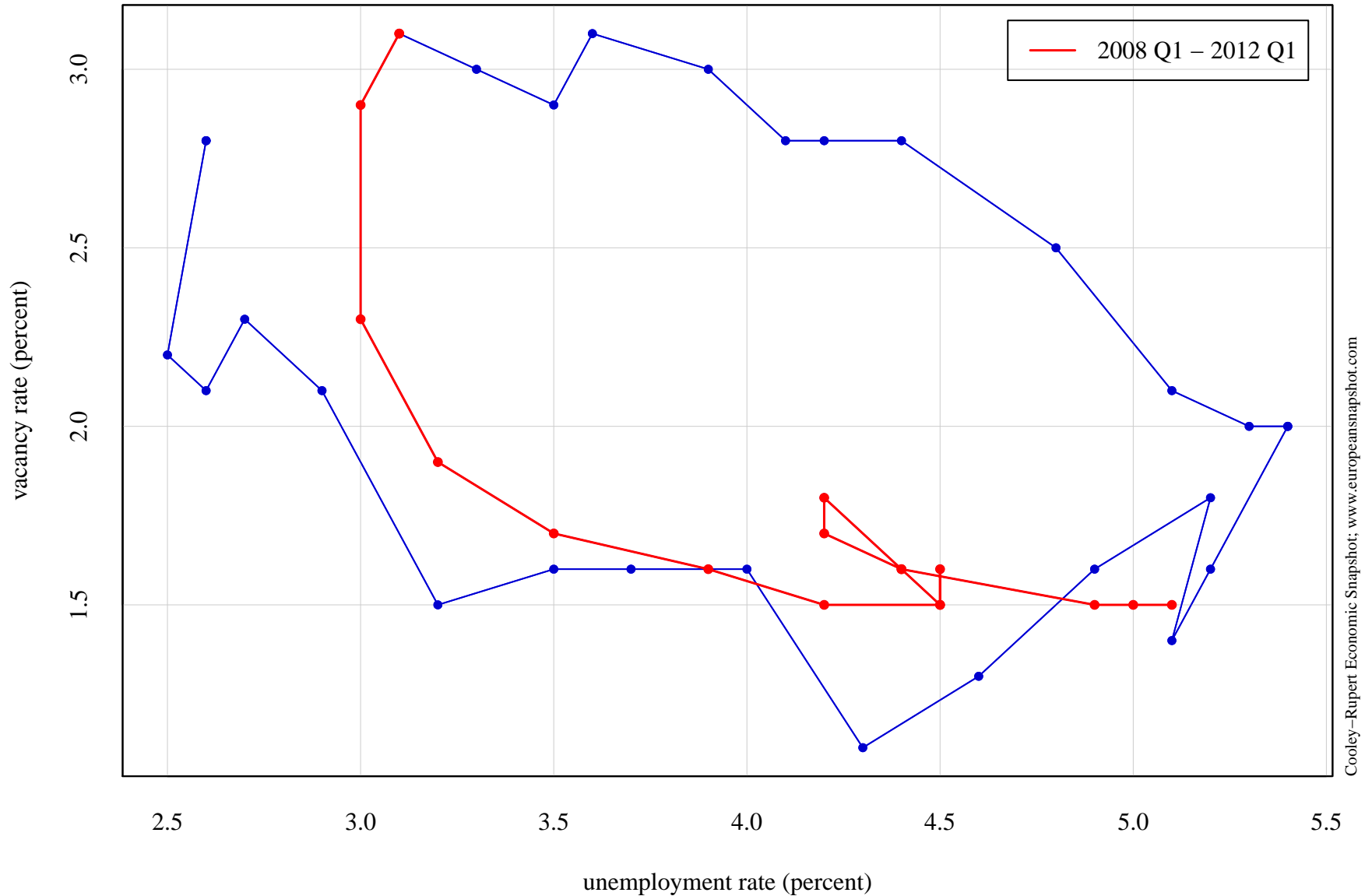
2009 Q4 – 2012 Q1





# Netherlands Beveridge Curve

2001 Q1 – 2012 Q1



# Spain Beveridge Curve

2009 Q1 – 2012 Q1

